



**ELECTRONIC COPY**

LG733556034  
Report verification at igi.org



September 11, 2025

IGI Report Number **LG733556034**

Description **LABORATORY GROWN DIAMOND**

Shape and Cutting Style **PRINCESS CUT**

Measurements **7.78 X 7.63 X 5.61 MM**

**GRADING RESULTS**

Carat Weight **3.06 CARATS**

Color Grade **F**

Clarity Grade **VVS 2**

**LABORATORY GROWN DIAMOND REPORT**

September 11, 2025

IGI Report Number **LG733556034**

Description **LABORATORY GROWN DIAMOND**

Shape and Cutting Style **PRINCESS CUT**

Measurements **7.78 X 7.63 X 5.61 MM**

**GRADING RESULTS**

Carat Weight **3.06 CARATS**

Color Grade **F**

Clarity Grade **VVS 2**

**ADDITIONAL GRADING INFORMATION**

Polish **EXCELLENT**

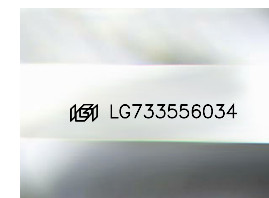
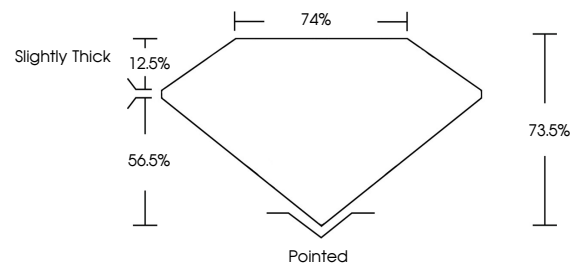
Symmetry **EXCELLENT**

Fluorescence **NONE**

Inscription(s) **LG733556034**

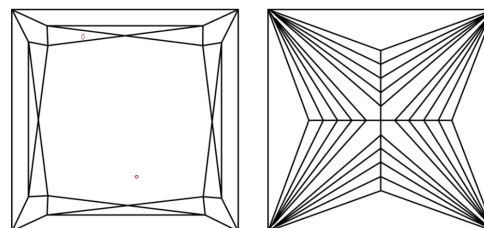
Comments: This Laboratory Grown Diamond was created by Chemical Vapor Deposition (CVD) growth process. Type IIa

**PROPORTIONS**



Sample Image Used

**CLARITY CHARACTERISTICS**



**KEY TO SYMBOLS**

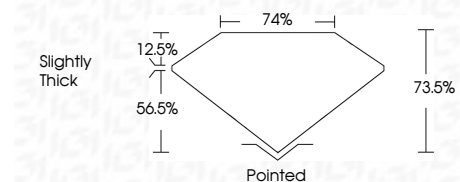
Red symbols indicate internal characteristics.  
Green symbols indicate external characteristics.

**COLOR**

D E F G H I J Faint Very Light Light

**CLARITY**

FL	IF	VVS <sup>1-2</sup>	VS <sup>1-2</sup>	SI <sup>1-2</sup>	I <sup>1-3</sup>
Flawless	Internally Flawless	Very Very Slightly Included	Very Slightly Included	Slightly Included	Included



**ADDITIONAL GRADING INFORMATION**

Polish **EXCELLENT**

Symmetry **EXCELLENT**

Fluorescence **NONE**

Inscription(s) **LG733556034**

Comments: This Laboratory Grown Diamond was created by Chemical Vapor Deposition (CVD) growth process. Type IIa



**IGI**



September 11, 2025  
IGI Report No LG733556034  
PRINCESS CUT

3.06 CARATS  
F

7.78 X 7.63 X 5.61 MM  
VVS 2  
73.5%  
74%  
Slightly Thick

Pointed  
EXCELLENT  
EXCELLENT  
NONE  
NONE  
IGI LG733556034

Comments: This Laboratory Grown Diamond was created by Chemical Vapor Deposition (CVD) growth process. Type IIa