



ELECTRONIC COPY

LG733557340
Report verification at igi.org



October 11, 2025
IGI Report Number **LG733557340**
Description **LABORATORY GROWN DIAMOND**
Shape and Cutting Style **SQUARE CUSHION MODIFIED BRILLIANT**
Measurements **11.70 X 11.65 X 7.24 MM**
GRADING RESULTS
Carat Weight **10.03 CARATS**
Color Grade **FANCY VIVID GREEN**
Clarity Grade **SI 1**

LABORATORY GROWN DIAMOND REPORT

October 11, 2025
IGI Report Number **LG733557340**
Description **LABORATORY GROWN DIAMOND**
Shape and Cutting Style **SQUARE CUSHION MODIFIED BRILLIANT**
Measurements **11.70 X 11.65 X 7.24 MM**

GRADING RESULTS

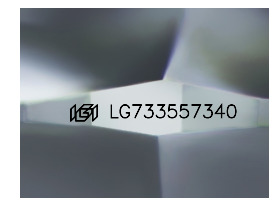
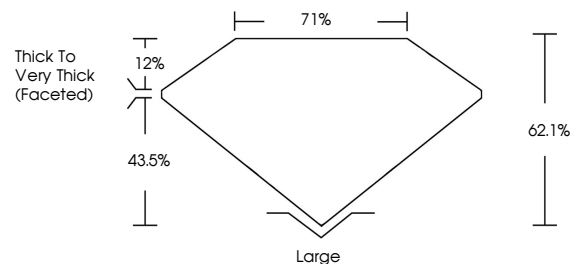
Carat Weight **10.03 CARATS**
Color Grade **FANCY VIVID GREEN**
Clarity Grade **SI 1**

ADDITIONAL GRADING INFORMATION

Polish **EXCELLENT**
Symmetry **EXCELLENT**
Fluorescence **VERY SLIGHT**
Inscription(s) **LG733557340**

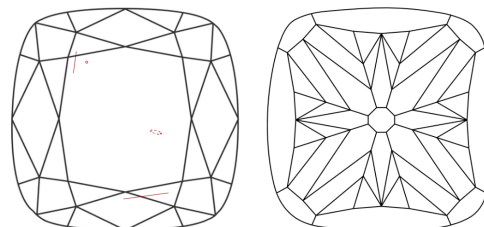
Comments: This Laboratory Grown Diamond was created by Chemical Vapor Deposition (CVD) growth process. Indications of post-growth treatment.

PROPORTIONS



Sample Image Used

CLARITY CHARACTERISTICS



KEY TO SYMBOLS

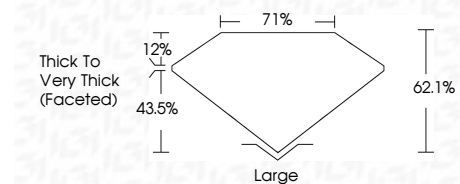
Red symbols indicate internal characteristics.
Green symbols indicate external characteristics.

COLOR

D E F G H I J Faint Very Light Light

CLARITY

FL	IF	VS ¹⁻²	VS ¹⁻²	SI ¹⁻²	I ¹⁻³
Flawless	Internally Flawless	Very Very Slightly Included	Very Slightly Included	Slightly Included	Included



ADDITIONAL GRADING INFORMATION

Polish **EXCELLENT**
Symmetry **EXCELLENT**
Fluorescence **VERY SLIGHT**
Inscription(s) **LG733557340**
Comments: This Laboratory Grown Diamond was created by Chemical Vapor Deposition (CVD) growth process. Indications of post-growth treatment.



October 11, 2025
IGI Report No LG733557340
SQUARE CUSHION MODIFIED BRILLIANT
11.70 X 11.65 X 7.24 MM
10.03 CARATS
FANCY VIVID GREEN
SI 1
62.1%
71%
Thick to Very Thick (Faceted)
Large
EXCELLENT
EXCELLENT
VERY SLIGHT
IGI LG733557340

Comments: This Laboratory Grown Diamond was created by Chemical Vapor Deposition (CVD) growth process. Indications of post-growth treatment.