



LABORATORY GROWN DIAMOND REPORT

September 12, 2025
 IGI Report Number **LG733557641**
 Description **LABORATORY GROWN DIAMOND**
 Shape and Cutting Style **ROUND BRILLIANT**
 Measurements **4.84 - 4.86 X 2.90 MM**

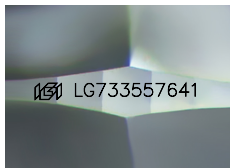
GRADING RESULTS

Carat Weight **0.41 CARAT**
 Color Grade **D**
 Clarity Grade **VVS 2**
 Cut Grade **IDEAL**

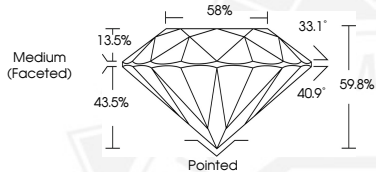
ADDITIONAL GRADING INFORMATION

Polish **EXCELLENT**
 Symmetry **VERY GOOD**
 Fluorescence **NONE**
 Inscription(s) **IGI LG733557641**

Comments: As Grown - No indication of post-growth treatment.
 This Laboratory Grown Diamond was created by High Pressure High
 Temperature (HPHT) growth process.
 Type II



Sample Image Used



September 12, 2025
 IGI Report Number **LG733557641**
 ROUND BRILLIANT
 LABORATORY GROWN DIAMOND
 4.84 - 4.86 X 2.90 MM
 0.41 CARAT
 D
 VVS 2
 IDEAL
 EXCELLENT
 VERY GOOD
 NONE
 IGI LG733557641

Comments: As Grown - No indication of post-growth treatment. This Laboratory Grown Diamond was created by High Pressure High Temperature (HPHT) growth process. Type II



September 12, 2025
 IGI Report Number **LG733557641**
 ROUND BRILLIANT
 LABORATORY GROWN DIAMOND
 4.84 - 4.86 X 2.90 MM
 0.41 CARAT
 D
 VVS 2
 IDEAL
 EXCELLENT
 VERY GOOD
 NONE
 IGI LG733557641

Comments: As Grown - No indication of post-growth treatment. This Laboratory Grown Diamond was created by High Pressure High Temperature (HPHT) growth process. Type II



THIS DOCUMENT WAS PRODUCED WITH THE FOLLOWING SECURITY MEASURES: SPECIAL DOCUMENT PAPER, INK SCREENS, WATERMARK, BACKGROUND DESIGNS, HOLOGRAM AND OTHER SECURITY FEATURES NOT LISTED AND DO EXCEED DOCUMENT SECURITY INDUSTRY GUIDELINES.