



ELECTRONIC COPY

LG733583707
Report verification at igi.org



September 12, 2025
IGI Report Number LG733583707
Description LABORATORY GROWN DIAMOND
Shape and Cutting Style SQUARE CUSHION MODIFIED BRILLIANT
Measurements 11.22 X 11.03 X 7.28 MM
GRADING RESULTS
Carat Weight 6.77 CARATS
Color Grade F
Clarity Grade VVS 2

LABORATORY GROWN DIAMOND REPORT

September 12, 2025
IGI Report Number LG733583707
Description LABORATORY GROWN DIAMOND
Shape and Cutting Style SQUARE CUSHION MODIFIED BRILLIANT
Measurements 11.22 X 11.03 X 7.28 MM

GRADING RESULTS

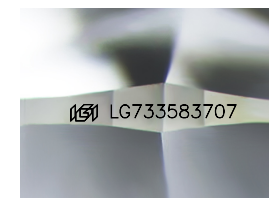
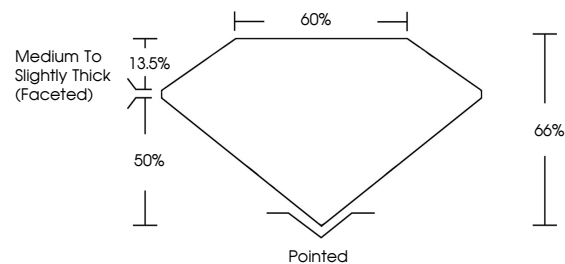
Carat Weight 6.77 CARATS
Color Grade F
Clarity Grade VVS 2

ADDITIONAL GRADING INFORMATION

Polish EXCELLENT
Symmetry EXCELLENT
Fluorescence NONE
Inscription(s) LG733583707

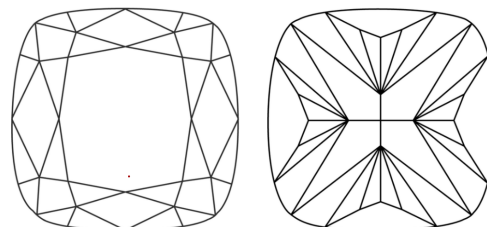
Comments: This Laboratory Grown Diamond was created by Chemical Vapor Deposition (CVD) growth process. Type IIa

PROPORTIONS



Sample Image Used

CLARITY CHARACTERISTICS



KEY TO SYMBOLS

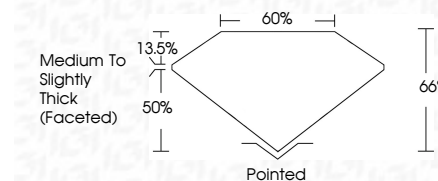
Red symbols indicate internal characteristics.
Green symbols indicate external characteristics.

COLOR

D E F G H I J Faint Very Light Light

CLARITY

IF WS 1-2 VS 1-2 SI 1-2 I 1-3
Internally Flawless Very Very Slightly Included Very Slightly Included Slightly Included Included



ADDITIONAL GRADING INFORMATION

Polish EXCELLENT
Symmetry EXCELLENT
Fluorescence NONE
Inscription(s) LG733583707
Comments: This Laboratory Grown Diamond was created by Chemical Vapor Deposition (CVD) growth process. Type IIa



September 12, 2025
IGI Report No LG733583707
SQUARE CUSHION MODIFIED BRILLIANT
11.22 X 11.03 X 7.28 MM
6.77 CARATS
F
VVS 2
66%
60%
Medium to Slightly Thick (Faceted)
Pointed
EXCELLENT
EXCELLENT
NONE
LG733583707
Comments: This Laboratory Grown Diamond was created by Chemical Vapor Deposition (CVD) growth process. Type IIa