



**ELECTRONIC COPY**

LG733587966  
Report verification at igi.org



September 12, 2025

IGI Report Number **LG733587966**

Description **LABORATORY GROWN DIAMOND**

Shape and Cutting Style **EMERALD CUT**

Measurements **10.52 X 6.80 X 4.44 MM**

**GRADING RESULTS**

Carat Weight **3.42 CARATS**

Color Grade **D**

Clarity Grade **VVS 1**

**LABORATORY GROWN DIAMOND REPORT**

September 12, 2025

IGI Report Number **LG733587966**

Description **LABORATORY GROWN DIAMOND**

Shape and Cutting Style **EMERALD CUT**

Measurements **10.52 X 6.80 X 4.44 MM**

**GRADING RESULTS**

Carat Weight **3.42 CARATS**

Color Grade **D**

Clarity Grade **VVS 1**

**ADDITIONAL GRADING INFORMATION**

Polish **EXCELLENT**

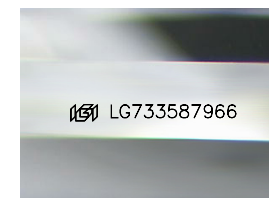
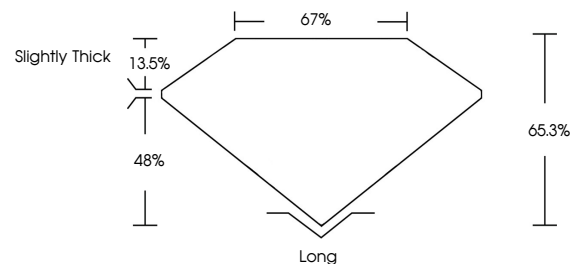
Symmetry **EXCELLENT**

Fluorescence **NONE**

Inscription(s) **LG733587966**

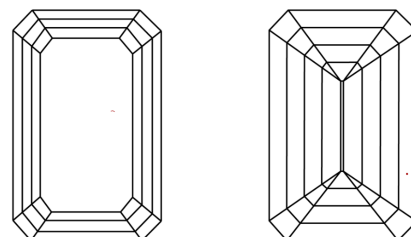
Comments: This Laboratory Grown Diamond was created by Chemical Vapor Deposition (CVD) growth process.  
Type IIa

**PROPORTIONS**



Sample Image Used

**CLARITY CHARACTERISTICS**



**KEY TO SYMBOLS**

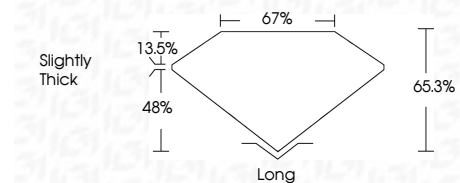
Red symbols indicate internal characteristics.  
Green symbols indicate external characteristics.

**COLOR**

D E F G H I J Faint Very Light Light

**CLARITY**

IF	VS <sup>1-2</sup>	VS <sup>1-2</sup>	SI <sup>1-2</sup>	I <sup>1-3</sup>
Internally Flawless	Very Very Slightly Included	Very Slightly Included	Slightly Included	Included



**ADDITIONAL GRADING INFORMATION**

Polish **EXCELLENT**

Symmetry **EXCELLENT**

Fluorescence **NONE**

Inscription(s) **LG733587966**

Comments: This Laboratory Grown Diamond was created by Chemical Vapor Deposition (CVD) growth process.  
Type IIa



**IGI**



September 12, 2025  
IGI Report No LG733587966  
EMERALD CUT

3.42 CARATS  
D

10.52 X 6.80 X 4.44 MM

Carat Weight  
Color Grade  
Clarity Grade  
Depth  
Table  
Girdle  
Slightly Thick

VS 1  
65.3%  
67%

Long  
EXCELLENT  
EXCELLENT  
NONE  
NONE

Inscription(s)  
 LG733587966

Comments: This Laboratory Grown Diamond was created by Chemical Vapor Deposition (CVD) growth process.  
Type IIa