



ELECTRONIC COPY

LG733589807
Report verification at igi.org



September 13, 2025

IGI Report Number **LG733589807**

Description **LABORATORY GROWN DIAMOND**

Shape and Cutting Style **EMERALD CUT**

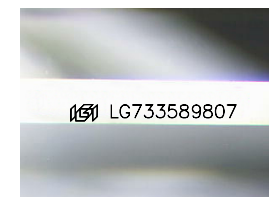
Measurements **9.67 X 6.80 X 4.66 MM**

GRADING RESULTS

Carat Weight **3.08 CARATS**

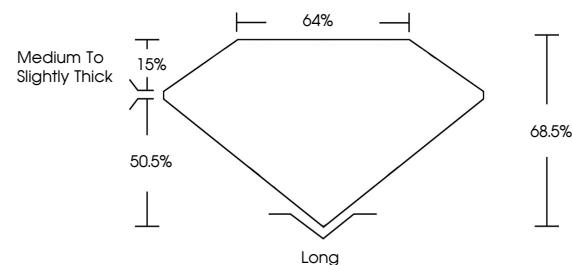
Color Grade **D**

Clarity Grade **VVS 2**

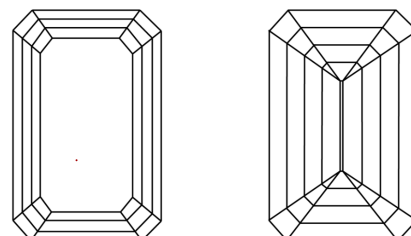


Sample Image Used

PROPORTIONS



CLARITY CHARACTERISTICS



KEY TO SYMBOLS

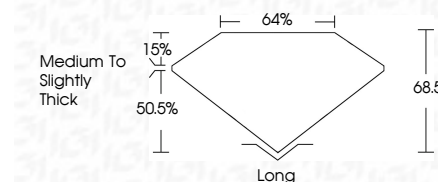
Red symbols indicate internal characteristics.
Green symbols indicate external characteristics.

COLOR

D E F G H I J Faint Very Light Light

CLARITY

IF	VS ¹⁻²	VS ¹⁻²	SI ¹⁻²	I ¹⁻³
Internally Flawless	Very Very Slightly Included	Very Slightly Included	Slightly Included	Included



ADDITIONAL GRADING INFORMATION

Polish **EXCELLENT**

Symmetry **EXCELLENT**

Fluorescence **NONE**

Inscription(s) **IGI LG733589807**

Comments: This Laboratory Grown Diamond was created by Chemical Vapor Deposition (CVD) growth process.
Type IIa



September 13, 2025
IGI Report No LG733589807
EMERALD CUT
9.67 X 6.80 X 4.66 MM
3.08 CARATS
D
VVS 2
68.5%
46%
Medium to Slightly Thick
Long
EXCELLENT
EXCELLENT
NONE
IGI LG733589807
Comments: This Laboratory Grown Diamond was created by Chemical Vapor Deposition (CVD) growth process.
Type IIa