



# INTERNATIONAL GEMOLOGICAL INSTITUTE

ELECTRONIC COPY

## LABORATORY GROWN DIAMOND REPORT

September 12, 2025

IGI Report Number

LG733591766

Description

LABORATORY GROWN DIAMOND

Shape and Cutting Style

SQUARE EMERALD CUT

Measurements

5.46 X 5.42 X 3.74 MM

### GRADING RESULTS

Carat Weight

0.94 CARAT

Color Grade

G

Clarity Grade

VVS 2

### ADDITIONAL GRADING INFORMATION

Polish

EXCELLENT

Symmetry

EXCELLENT

Fluorescence

NONE

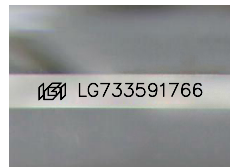
Inscription(s)

IGI LG733591766

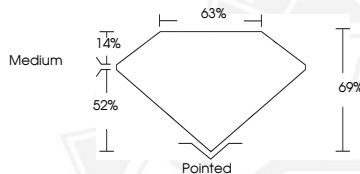
Comments: As Grown - No indication of post-growth treatment.

This Laboratory Grown Diamond was created by High Pressure High Temperature (HPHT) growth process.

Type II



Sample Image Used



September 12, 2025

IGI Report Number LG733591766

SQUARE EMERALD CUT

LABORATORY GROWN DIAMOND

5.46 X 5.42 X 3.74 MM

Carat Weight 0.94 CARAT

Color Grade G

Clarity Grade VVS 2

Polish EXCELLENT

Symmetry EXCELLENT

Fluorescence NONE

Inscription(s) IGI LG733591766

Comments: As Grown - No indication of post-growth treatment. This Laboratory Grown Diamond was created by High Pressure High Temperature (HPHT) growth process. Type II



September 12, 2025

IGI Report Number LG733591766

SQUARE EMERALD CUT

LABORATORY GROWN DIAMOND

5.46 X 5.42 X 3.74 MM

Carat Weight 0.94 CARAT

Color Grade G

Clarity Grade VVS 2

Polish EXCELLENT

Symmetry EXCELLENT

Fluorescence NONE

Inscription(s) IGI LG733591766

Comments: As Grown - No indication of post-growth treatment. This Laboratory Grown Diamond was created by High Pressure High Temperature (HPHT) growth process. Type II



THIS DOCUMENT WAS PRODUCED WITH THE FOLLOWING SECURITY MEASURES: SPECIAL DOCUMENT PAPER, INK SCREENS, WATERMARK, BACKGROUND DESIGNS, HOLOGRAM AND OTHER SECURITY FEATURES NOT LISTED AND DO EXCEED DOCUMENT SECURITY INDUSTRY GUIDELINES.

For terms & conditions and to verify this report, please visit [www.igi.org](http://www.igi.org)