



ELECTRONIC COPY

LG733592425
Report verification at igi.org



September 14, 2025

IGI Report Number **LG733592425**

Description **LABORATORY GROWN DIAMOND**

Shape and Cutting Style **PRINCESS CUT**

Measurements **10.03 X 9.84 X 6.75 MM**

GRADING RESULTS

Carat Weight **6.01 CARATS**

Color Grade **F**

Clarity Grade **VS 1**

September 14, 2025
IGI Report Number **LG733592425**
Description **LABORATORY GROWN DIAMOND**
Shape and Cutting Style **PRINCESS CUT**
Measurements **10.03 X 9.84 X 6.75 MM**

GRADING RESULTS

Carat Weight **6.01 CARATS**

Color Grade **F**

Clarity Grade **VS 1**

ADDITIONAL GRADING INFORMATION

Polish **EXCELLENT**

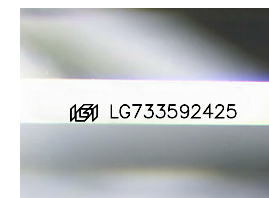
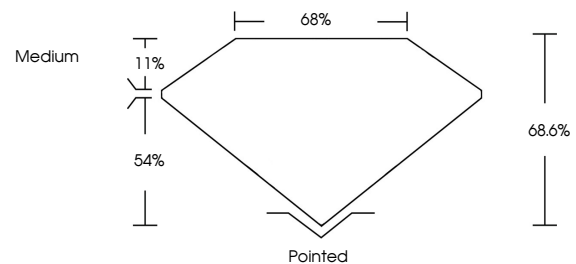
Symmetry **EXCELLENT**

Fluorescence **NONE**

Inscription(s) **IGI LG733592425**

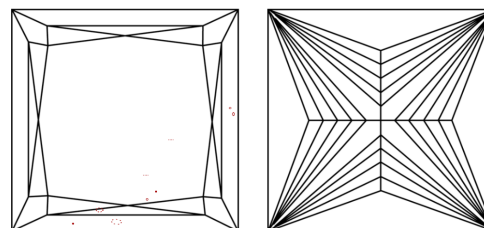
Comments: This Laboratory Grown Diamond was created by Chemical Vapor Deposition (CVD) growth process.
Type IIa

PROPORTIONS



Sample Image Used

CLARITY CHARACTERISTICS



KEY TO SYMBOLS

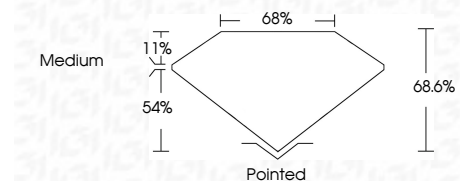
Red symbols indicate internal characteristics.
Green symbols indicate external characteristics.

COLOR

D E F G H I J Faint Very Light Light

CLARITY

IF	VS ¹⁻²	VS ¹⁻²	SI ¹⁻²	I ¹⁻³
Internally Flawless	Very Very Slightly Included	Very Slightly Included	Slightly Included	Included



ADDITIONAL GRADING INFORMATION

Polish **EXCELLENT**

Symmetry **EXCELLENT**

Fluorescence **NONE**

Inscription(s) **IGI LG733592425**

Comments: This Laboratory Grown Diamond was created by Chemical Vapor Deposition (CVD) growth process.
Type IIa



September 14, 2025
IGI Report No LG733592425
PRINCESS CUT

6.01 CARATS
F

10.03 X 9.84 X 6.75 MM

Color Grade VS 1
Depth 68.6%
Table 54%
Girdle Medium

Culet Pointed
Polish EXCELLENT
Symmetry EXCELLENT
Fluorescence NONE
Inscription(s) IGI LG733592425

Comments: This Laboratory Grown Diamond was created by Chemical Vapor Deposition (CVD) growth process.
Type IIa