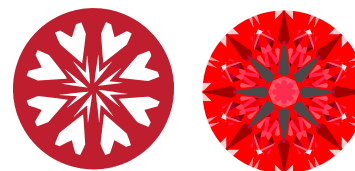




Light Performance Grade: Exceptional



Structured Light Environment Representation

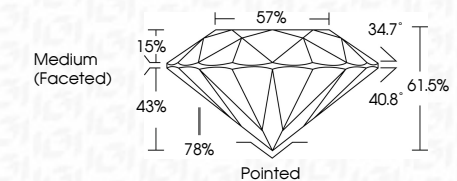


COLOR scale from D to Light

CLARITY scale from IF to Included



September 13, 2025 IGI Report Number LG734516971 Description LABORATORY GROWN DIAMOND Shape and Cutting Style ROUND BRILLIANT Measurements 8.89 - 8.92 X 5.47 MM GRADING RESULTS Carat Weight 2.66 CARATS Color Grade D Clarity Grade VS 1 Cut Grade IDEAL



ADDITIONAL GRADING INFORMATION Polish EXCELLENT Symmetry EXCELLENT Fluorescence NONE Inscription(s) IGI LG734516971 Comments: HEARTS & ARROWS This Laboratory Grown Diamond was created by Chemical Vapor Deposition (CVD) growth process. Type IIa



September 13, 2025 IGI Report No. LG734516971 ROUND BRILLIANT 8.89 - 8.92 X 5.47 MM 2.66 CARATS D VS 1 IDEAL 61.5% 57% Medium (Faceted) Polished EXCELLENT EXCELLENT NONE IGI LG734516971 Comments: HEARTS & ARROWS This Laboratory Grown Diamond was created by Chemical Vapor Deposition (CVD) growth process. Type IIa

ELECTRONIC COPY LABORATORY GROWN DIAMOND REPORT

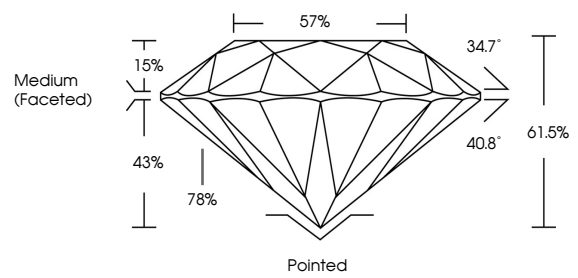
September 13, 2025 IGI Report Number LG734516971 Description LABORATORY GROWN DIAMOND Shape and Cutting Style ROUND BRILLIANT Measurements 8.89 - 8.92 x 5.47 mm

GRADING RESULTS Carat Weight 2.66 CARATS Color Grade D Clarity Grade VS 1 Cut Grade IDEAL

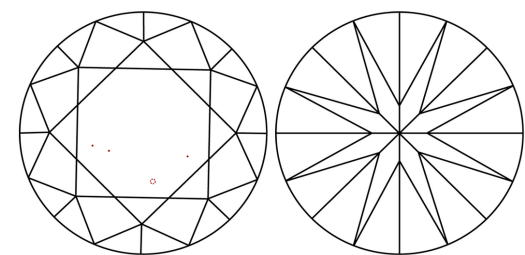
ADDITIONAL GRADING INFORMATION Polish EXCELLENT Symmetry EXCELLENT Fluorescence NONE Inscription(s) IGI LG734516971

Comments: HEARTS & ARROWS This Laboratory Grown Diamond was created by Chemical Vapor Deposition (CVD) growth process. Type IIa

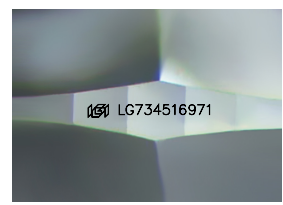
PROPORTIONS



CLARITY CHARACTERISTICS



KEY TO SYMBOLS Red symbols indicate internal characteristics. Green symbols indicate external characteristics.



Sample Image Used

