



**ELECTRONIC COPY**

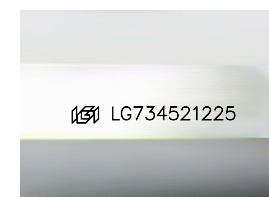
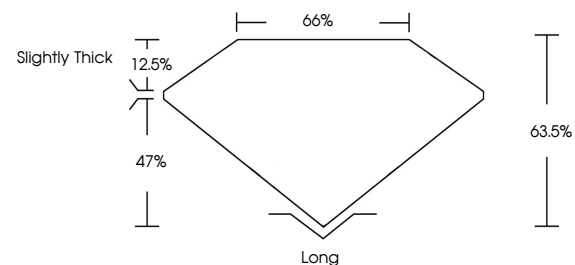
LG734521225  
Report verification at igi.org



September 16, 2025  
IGI Report Number **LG734521225**  
Description **LABORATORY GROWN DIAMOND**  
Shape and Cutting Style **EMERALD CUT**  
Measurements **14.18 X 9.29 X 5.90 MM**  
**GRADING RESULTS**  
Carat Weight **7.98 CARATS**  
Color Grade **F**  
Clarity Grade **VVS 2**

September 16, 2025  
IGI Report Number **LG734521225**  
Description **LABORATORY GROWN DIAMOND**  
Shape and Cutting Style **EMERALD CUT**  
Measurements **14.18 X 9.29 X 5.90 MM**

**PROPORTIONS**

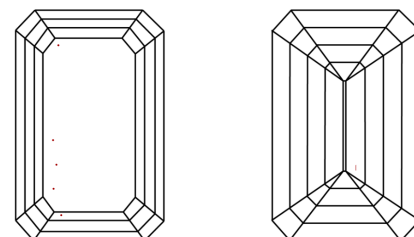


Sample Image Used

**GRADING RESULTS**

Carat Weight **7.98 CARATS**  
Color Grade **F**  
Clarity Grade **VVS 2**

**CLARITY CHARACTERISTICS**



**KEY TO SYMBOLS**

Red symbols indicate internal characteristics.  
Green symbols indicate external characteristics.

**ADDITIONAL GRADING INFORMATION**

Polish **EXCELLENT**  
Symmetry **EXCELLENT**  
Fluorescence **NONE**  
Inscription(s) **IGI LG734521225**

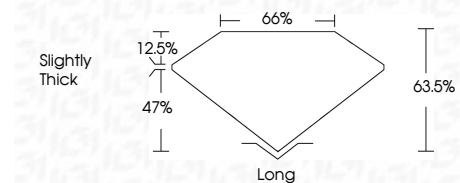
Comments: This Laboratory Grown Diamond was created by Chemical Vapor Deposition (CVD) growth process.  
Type IIa

**COLOR**

D E F G H I J Faint Very Light Light

**CLARITY**

IF	VS <sup>1-2</sup>	VS <sup>1-2</sup>	SI <sup>1-2</sup>	I <sup>1-3</sup>
Internally Flawless	Very Very Slightly Included	Very Slightly Included	Slightly Included	Included



**ADDITIONAL GRADING INFORMATION**

Polish **EXCELLENT**  
Symmetry **EXCELLENT**  
Fluorescence **NONE**  
Inscription(s) **IGI LG734521225**  
Comments: This Laboratory Grown Diamond was created by Chemical Vapor Deposition (CVD) growth process.  
Type IIa



**IGI**



September 16, 2025  
IGI Report No LG734521225  
**EMERALD CUT**  
14.18 X 9.29 X 5.90 MM  
7.98 CARATS  
F  
VVS 2  
63.5%  
65%  
Slightly Thick  
Long  
EXCELLENT  
EXCELLENT  
NONE  
IGI LG734521225  
Comments: This Laboratory Grown Diamond was created by Chemical Vapor Deposition (CVD) growth process.  
Type IIa