



**ELECTRONIC COPY**

LG734527938  
Report verification at igi.org



September 27, 2025

IGI Report Number **LG734527938**

Description **LABORATORY GROWN DIAMOND**

Shape and Cutting Style **EMERALD CUT**

Measurements **6.79 X 4.89 X 3.35 MM**

**GRADING RESULTS**

Carat Weight **1.13 CARAT**

Color Grade **FANCY VIVID GREEN**

Clarity Grade **VS 1**

September 27, 2025  
IGI Report Number **LG734527938**  
Description **LABORATORY GROWN DIAMOND**  
Shape and Cutting Style **EMERALD CUT**  
Measurements **6.79 X 4.89 X 3.35 MM**

**GRADING RESULTS**

Carat Weight **1.13 CARAT**

Color Grade **FANCY VIVID GREEN**

Clarity Grade **VS 1**

**ADDITIONAL GRADING INFORMATION**

Polish **EXCELLENT**

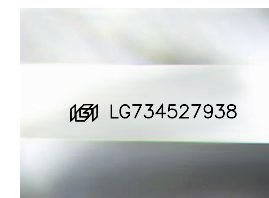
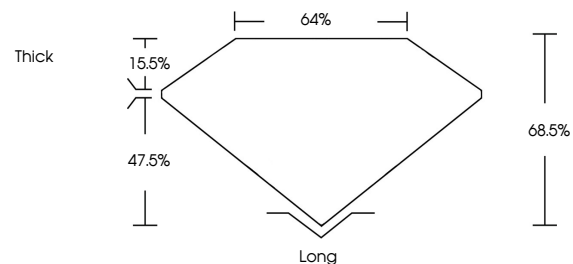
Symmetry **EXCELLENT**

Fluorescence **NONE**

Inscription(s) **IGI LG734527938**

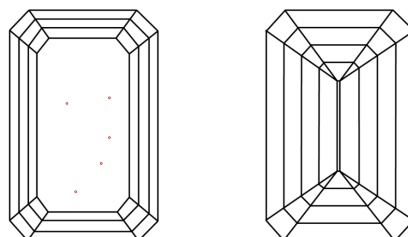
Comments: This Laboratory Grown Diamond was created by Chemical Vapor Deposition (CVD) growth process. Indications of post-growth treatment.

**PROPORTIONS**



Sample Image Used

**CLARITY CHARACTERISTICS**



**KEY TO SYMBOLS**

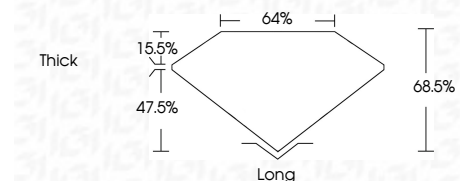
Red symbols indicate internal characteristics.  
Green symbols indicate external characteristics.

**COLOR**

D E F G H I J Faint Very Light Light

**CLARITY**

IF	WS <sup>1-2</sup>	VS <sup>1-2</sup>	SI <sup>1-2</sup>	I <sup>1-3</sup>
Internally Flawless	Very Very Slightly Included	Very Slightly Included	Slightly Included	Included



**ADDITIONAL GRADING INFORMATION**

Polish **EXCELLENT**

Symmetry **EXCELLENT**

Fluorescence **NONE**

Inscription(s) **IGI LG734527938**

Comments: This Laboratory Grown Diamond was created by Chemical Vapor Deposition (CVD) growth process. Indications of post-growth treatment.



September 27, 2025  
IGI Report No LG734527938  
**EMERALD CUT**  
1.13 CARAT  
FANCY VIVID GREEN  
VS 1  
68.5%  
47.5%  
Thick  
Long  
EXCELLENT  
EXCELLENT  
NONE  
IGI LG734527938  
Comments: This Laboratory Grown Diamond was created by Chemical Vapor Deposition (CVD) growth process. Indications of post-growth treatment.