



ELECTRONIC COPY

LG734537227
Report verification at igi.org



September 15, 2025

IGI Report Number **LG734537227**

Description **LABORATORY GROWN DIAMOND**

Shape and Cutting Style **PRINCESS CUT**

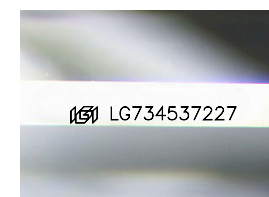
Measurements **6.76 X 6.65 X 4.55 MM**

GRADING RESULTS

Carat Weight **1.81 CARAT**

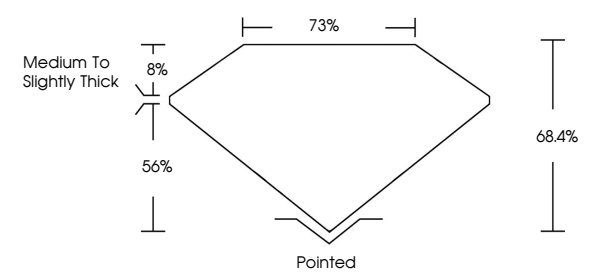
Color Grade **E**

Clarity Grade **VVS 2**

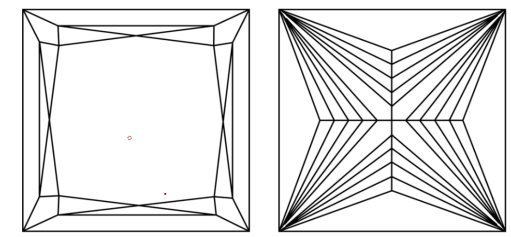


Sample Image Used

PROPORTIONS



CLARITY CHARACTERISTICS



KEY TO SYMBOLS

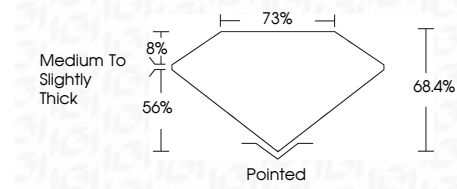
Red symbols indicate internal characteristics.
Green symbols indicate external characteristics.

COLOR

D	E	F	G	H	I	J	Faint	Very Light	Light
---	---	---	---	---	---	---	-------	------------	-------

CLARITY

IF	VS ¹⁻²	VS ¹⁻²	SI ¹⁻²	I ¹⁻³
Internally Flawless	Very Very Slightly Included	Very Slightly Included	Slightly Included	Included



ADDITIONAL GRADING INFORMATION

Polish **EXCELLENT**

Symmetry **EXCELLENT**

Fluorescence **NONE**

Inscription(s) **IGI LG734537227**

Comments: This Laboratory Grown Diamond was created by Chemical Vapor Deposition (CVD) growth process.
Type IIa



IGI



September 15, 2025
IGI Report No LG734537227
PRINCESS CUT
6.76 X 6.65 X 4.55 MM
1.81 CARAT
E
VVS 2
68.4%
75%
Medium to Slightly Thick
Pointed
EXCELLENT
EXCELLENT
NONE
IGI LG734537227

Comments: This Laboratory Grown Diamond was created by Chemical Vapor Deposition (CVD) growth process.
Type IIa