



**ELECTRONIC COPY**

LG735508288  
Report verification at igi.org



September 16, 2025

IGI Report Number **LG735508288**

Description **LABORATORY GROWN DIAMOND**

Shape and Cutting Style **ROUND BRILLIANT**

Measurements **10.13 - 10.17 X 6.34 MM**

**GRADING RESULTS**

Carat Weight **4.05 CARATS**

Color Grade **D**

Clarity Grade **VS 1**

Cut Grade **IDEAL**

September 16, 2025  
IGI Report Number **LG735508288**  
Description **LABORATORY GROWN DIAMOND**  
Shape and Cutting Style **ROUND BRILLIANT**  
Measurements **10.13 - 10.17 X 6.34 MM**

**GRADING RESULTS**

Carat Weight **4.05 CARATS**

Color Grade **D**

Clarity Grade **VS 1**

Cut Grade **IDEAL**

**ADDITIONAL GRADING INFORMATION**

Polish **EXCELLENT**

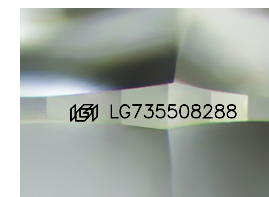
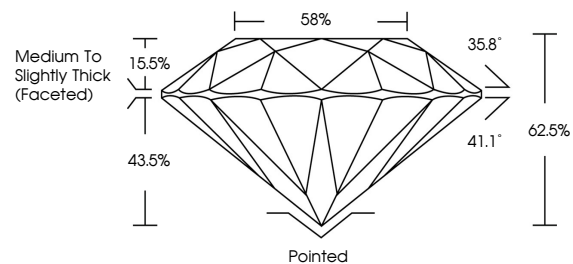
Symmetry **EXCELLENT**

Fluorescence **NONE**

Inscription(s) **LG735508288**

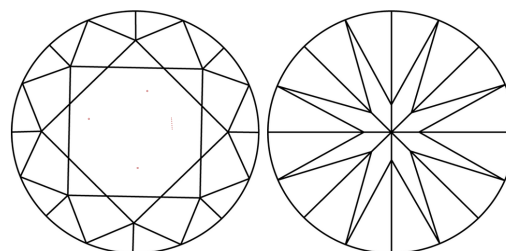
Comments: This Laboratory Grown Diamond was created by Chemical Vapor Deposition (CVD) growth process.  
Type IIa

**PROPORTIONS**



Sample Image Used

**CLARITY CHARACTERISTICS**



**KEY TO SYMBOLS**

Red symbols indicate internal characteristics.  
Green symbols indicate external characteristics.

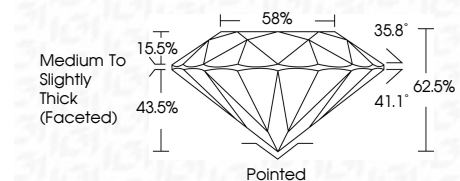
**COLOR**

D E F G H I J Faint Very Light Light

**CLARITY**

IF WS<sup>1-2</sup> VS<sup>1-2</sup> SI<sup>1-2</sup> I<sup>1-3</sup>

Internally Flawless Very Very Slightly Included Very Slightly Included Slightly Included Included



**ADDITIONAL GRADING INFORMATION**

Polish **EXCELLENT**

Symmetry **EXCELLENT**

Fluorescence **NONE**

Inscription(s) **LG735508288**

Comments: This Laboratory Grown Diamond was created by Chemical Vapor Deposition (CVD) growth process.  
Type IIa



**IGI**



September 16, 2025  
IGI Report No LG735508288  
**ROUND BRILLIANT**

**4.05 CARATS**  
D

**VS 1**  
**IDEAL**

**58%**  
Medium To Slightly Thick (Faceted)

**Pointed**  
**EXCELLENT**  
**EXCELLENT**  
**NONE**  
**IGI LG735508288**

**Comments:**  
This Laboratory Grown Diamond was created by Chemical Vapor Deposition (CVD) growth process.  
Type IIa