



ELECTRONIC COPY

LG735518250
Report verification at igi.org



September 17, 2025

IGI Report Number **LG735518250**

Description **LABORATORY GROWN DIAMOND**

Shape and Cutting Style **PRINCESS CUT**

Measurements **7.17 X 7.07 X 5.23 MM**

GRADING RESULTS

Carat Weight **2.36 CARATS**

Color Grade **E**

Clarity Grade **VS 2**

LABORATORY GROWN DIAMOND REPORT

September 17, 2025

IGI Report Number **LG735518250**

Description **LABORATORY GROWN DIAMOND**

Shape and Cutting Style **PRINCESS CUT**

Measurements **7.17 X 7.07 X 5.23 MM**

GRADING RESULTS

Carat Weight **2.36 CARATS**

Color Grade **E**

Clarity Grade **VS 2**

ADDITIONAL GRADING INFORMATION

Polish **EXCELLENT**

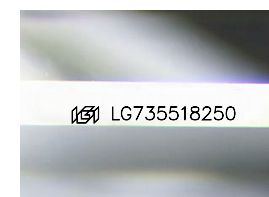
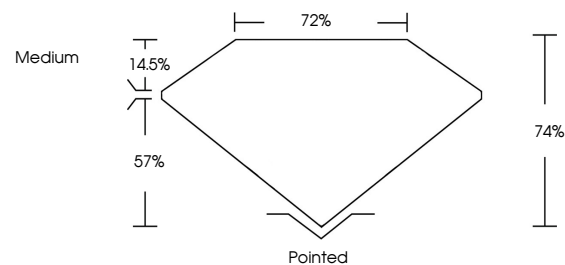
Symmetry **EXCELLENT**

Fluorescence **NONE**

Inscription(s) **IGI LG735518250**

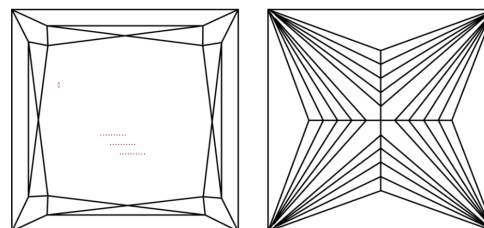
Comments: This Laboratory Grown Diamond was created by Chemical Vapor Deposition (CVD) growth process. Type IIa

PROPORTIONS



Sample Image Used

CLARITY CHARACTERISTICS



KEY TO SYMBOLS

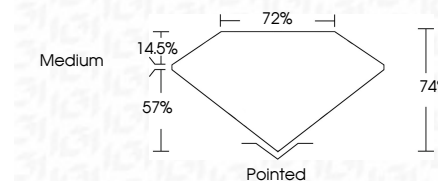
Red symbols indicate internal characteristics.
Green symbols indicate external characteristics.

COLOR

D E F G H I J Faint Very Light Light

CLARITY

IF	VS ¹⁻²	VS ¹⁻²	SI ¹⁻²	I ¹⁻³
Internally Flawless	Very Very Slightly Included	Very Slightly Included	Slightly Included	Included



ADDITIONAL GRADING INFORMATION

Polish **EXCELLENT**

Symmetry **EXCELLENT**

Fluorescence **NONE**

Inscription(s) **IGI LG735518250**

Comments: This Laboratory Grown Diamond was created by Chemical Vapor Deposition (CVD) growth process. Type IIa



IGI



September 17, 2025
IGI Report No LG735518250
PRINCESS CUT

2.36 CARATS
E

7.17 X 7.07 X 5.23 MM
Color Grade
Clarity Grade VS 2
Table 74%
Depth 57%
Girdle Medium

Pointed
EXCELLENT
EXCELLENT
NONE
IGI LG735518250

Culet
Polish
Symmetry
Fluorescence
Inscription(s)

Comments: This Laboratory Grown Diamond was created by Chemical Vapor Deposition (CVD) growth process. Type IIa