



ELECTRONIC COPY

LG735527331 Report verification at igi.org



September 18, 2025
IGI Report Number LG735527331
Description LABORATORY GROWN DIAMOND
Shape and Cutting Style ROUND BRILLIANT
Measurements 10.27 - 10.33 X 6.21 MM
GRADING RESULTS
Carat Weight 4.05 CARATS
Color Grade E
Clarity Grade VVS 2
Cut Grade IDEAL

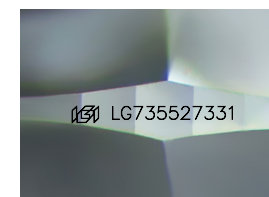
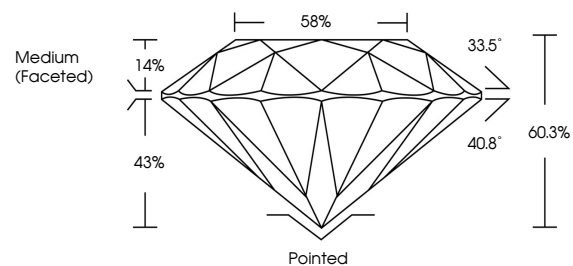
September 18, 2025
IGI Report Number LG735527331
Description LABORATORY GROWN DIAMOND
Shape and Cutting Style ROUND BRILLIANT
Measurements 10.27 - 10.33 X 6.21 MM
GRADING RESULTS
Carat Weight 4.05 CARATS
Color Grade E
Clarity Grade VVS 2
Cut Grade IDEAL

ADDITIONAL GRADING INFORMATION

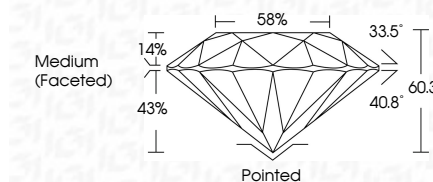
Polish EXCELLENT
Symmetry EXCELLENT
Fluorescence NONE
Inscription(s) IGI LG735527331

Comments: This Laboratory Grown Diamond was created by Chemical Vapor Deposition (CVD) growth process. Type IIa

PROPORTIONS



Sample Image Used



COLOR

D E F G H I J Faint Very Light Light

CLARITY

IF WS 1-2 VS 1-2 SI 1-2 I 1-3
Internally Flawless Very Very Slightly Included Very Slightly Included Slightly Included Included

ADDITIONAL GRADING INFORMATION

Polish EXCELLENT
Symmetry EXCELLENT
Fluorescence NONE
Inscription(s) IGI LG735527331
Comments: This Laboratory Grown Diamond was created by Chemical Vapor Deposition (CVD) growth process. Type IIa



IGI



September 18, 2025
IGI Report No LG735527331
ROUND BRILLIANT
4.05 CARATS E
10.27 - 10.33 X 6.21 MM
Carat Weight
Color Grade
Clarity Grade
Cut Grade
Depth
Table
Girdle
Medium (Faceted)
60.3%
58%
33.5°
40.8°
Pointed
EXCELLENT
EXCELLENT
NONE
IGI LG735527331
Comments: This Laboratory Grown Diamond was created by Chemical Vapor Deposition (CVD) growth process. Type IIa