



**ELECTRONIC COPY**

LG735529387  
Report verification at igi.org



October 1, 2025  
IGI Report Number **LG735529387**  
Description **LABORATORY GROWN DIAMOND**  
Shape and Cutting Style **CUT CORNERED  
RECTANGULAR MODIFIED  
BRILLIANT**  
Measurements **7.61 X 5.70 X 3.76 MM**  
**GRADING RESULTS**  
Carat Weight **1.32 CARAT**  
Color Grade **E**  
Clarity Grade **VVS 2**  
Cut Grade **EXCELLENT**

October 1, 2025  
IGI Report Number **LG735529387**  
Description **LABORATORY GROWN DIAMOND**  
Shape and Cutting Style **CUT CORNERED RECTANGULAR  
MODIFIED BRILLIANT**  
Measurements **7.61 X 5.70 X 3.76 MM**

**GRADING RESULTS**

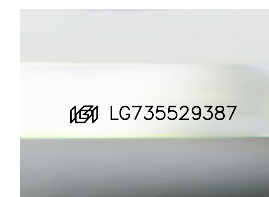
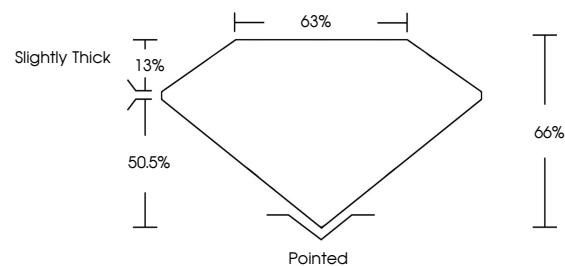
Carat Weight **1.32 CARAT**  
Color Grade **E**  
Clarity Grade **VVS 2**  
Cut Grade **EXCELLENT**

**ADDITIONAL GRADING INFORMATION**

Polish **EXCELLENT**  
Symmetry **VERY GOOD**  
Fluorescence **NONE**  
Inscription(s) **IGI LG735529387**

Comments: This Laboratory Grown Diamond was created by Chemical Vapor Deposition (CVD) growth process. Type IIa

**PROPORTIONS**



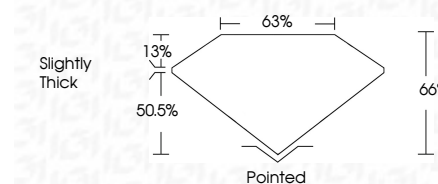
Sample Image Used

**COLOR**

D E F G H I J Faint Very Light Light

**CLARITY**

FL	IF	VVS <sup>1-2</sup>	VS <sup>1-2</sup>	SI <sup>1-2</sup>	I <sup>1-3</sup>
Flawless	Internally Flawless	Very Very Slightly Included	Very Slightly Included	Slightly Included	Included



**ADDITIONAL GRADING INFORMATION**

Polish **EXCELLENT**  
Symmetry **VERY GOOD**  
Fluorescence **NONE**  
Inscription(s) **IGI LG735529387**  
Comments: This Laboratory Grown Diamond was created by Chemical Vapor Deposition (CVD) growth process. Type IIa



October 1, 2025  
IGI Report No LG735529387  
CUT CORNERED RECT. MODIFIED BRILLIANT  
7.61 X 5.70 X 3.76 MM  
1.32 CARAT  
E  
VVS 2  
EXCELLENT  
65%  
68%  
Slightly Thick  
Pointed  
EXCELLENT  
VERY GOOD  
NONE  
IGI LG735529387  
Comments: This Laboratory Grown Diamond was created by Chemical Vapor Deposition (CVD) growth process. Type IIa