



ELECTRONIC COPY

LG735540965
Report verification at igi.org



September 19, 2025

IGI Report Number **LG735540965**

Description **LABORATORY GROWN DIAMOND**

Shape and Cutting Style **ROUND BRILLIANT**

Measurements **7.64 - 7.70 X 4.71 MM**

GRADING RESULTS

Carat Weight **1.69 CARAT**

Color Grade **E**

Clarity Grade **VVS 2**

Cut Grade **IDEAL**

September 19, 2025

IGI Report Number **LG735540965**

Description **LABORATORY GROWN DIAMOND**

Shape and Cutting Style **ROUND BRILLIANT**

Measurements **7.64 - 7.70 X 4.71 MM**

GRADING RESULTS

Carat Weight **1.69 CARAT**

Color Grade **E**

Clarity Grade **VVS 2**

Cut Grade **IDEAL**

ADDITIONAL GRADING INFORMATION

Polish **EXCELLENT**

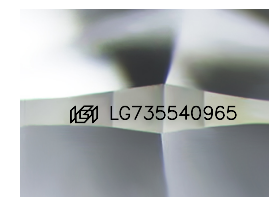
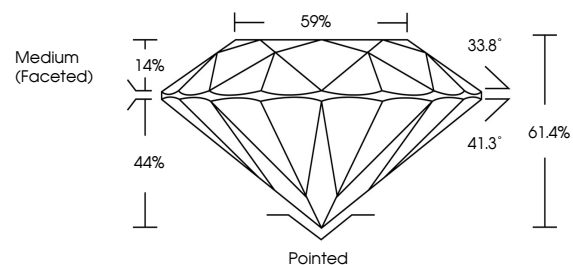
Symmetry **EXCELLENT**

Fluorescence **NONE**

Inscription(s) **LG735540965**

Comments: This Laboratory Grown Diamond was created by Chemical Vapor Deposition (CVD) growth process.
Type IIa

PROPORTIONS



Sample Image Used

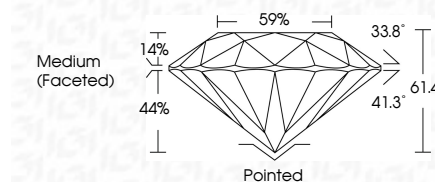
COLOR

D E F G H I J Faint Very Light Light

CLARITY

IF WS¹⁻² VS¹⁻² SI¹⁻² I¹⁻³

Internally Flawless Very Very Slightly Included Very Slightly Included Slightly Included Included



ADDITIONAL GRADING INFORMATION

Polish **EXCELLENT**

Symmetry **EXCELLENT**

Fluorescence **NONE**

Inscription(s) **LG735540965**

Comments: This Laboratory Grown Diamond was created by Chemical Vapor Deposition (CVD) growth process.
Type IIa



IGI



September 19, 2025	IGI Report No LG735540965	ROUND BRILLIANT	7.64 - 7.70 X 4.71 MM	1.69 CARAT	E	VVS 2	IDEAL	61.4%	59%	Medium (Faceted)	Pointed	EXCELLENT	EXCELLENT	NONE	LG735540965
Color Grade	Clarity Grade	Cut Grade	Table	Girdle	Depth	Polish	Symmetry	Fluorescence	Inscription(s)	Comments: This Laboratory Grown Diamond was created by Chemical Vapor Deposition (CVD) growth process. Type IIa					