



ELECTRONIC COPY

LG735553139
Report verification at igi.org



October 1, 2025

IGI Report Number **LG735553139**

Description **LABORATORY GROWN DIAMOND**

Shape and Cutting Style **EMERALD CUT**

Measurements **11.40 X 7.93 X 5.21 MM**

GRADING RESULTS

Carat Weight **5.01 CARATS**

Color Grade **FANCY LIGHT YELLOW**

Clarity Grade **VS 2**

LABORATORY GROWN DIAMOND REPORT

October 1, 2025

IGI Report Number **LG735553139**

Description **LABORATORY GROWN DIAMOND**

Shape and Cutting Style **EMERALD CUT**

Measurements **11.40 X 7.93 X 5.21 MM**

GRADING RESULTS

Carat Weight **5.01 CARATS**

Color Grade **FANCY LIGHT YELLOW**

Clarity Grade **VS 2**

ADDITIONAL GRADING INFORMATION

Polish **EXCELLENT**

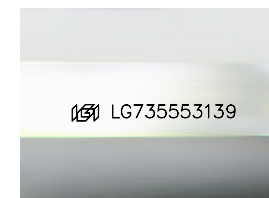
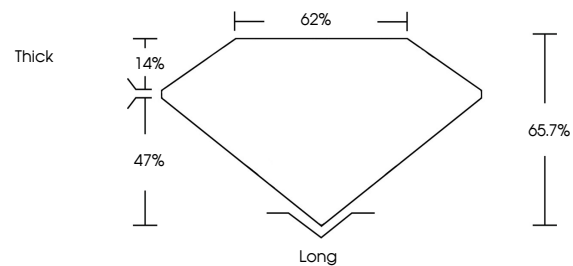
Symmetry **EXCELLENT**

Fluorescence **SLIGHT**

Inscription(s) **LG735553139**

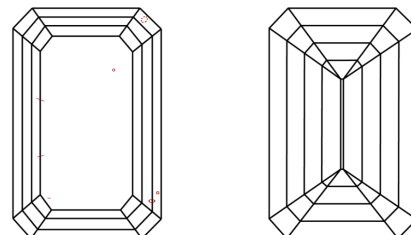
Comments: This Laboratory Grown Diamond was created by Chemical Vapor Deposition (CVD) growth process. Indications of post-growth treatment.

PROPORTIONS



Sample Image Used

CLARITY CHARACTERISTICS



KEY TO SYMBOLS

Red symbols indicate internal characteristics.
Green symbols indicate external characteristics.

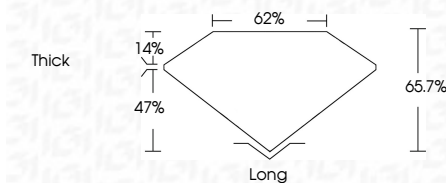
COLOR

D E F G H I J Faint Very Light Light

CLARITY

IF WS¹⁻² VS¹⁻² SI¹⁻² I¹⁻³

Internally Flawless Very Very Slightly Included Very Slightly Included Slightly Included Included



ADDITIONAL GRADING INFORMATION

Polish **EXCELLENT**

Symmetry **EXCELLENT**

Fluorescence **SLIGHT**

Inscription(s) **LG735553139**

Comments: This Laboratory Grown Diamond was created by Chemical Vapor Deposition (CVD) growth process. Indications of post-growth treatment.



IGI



October 1, 2025	5.01 CARATS
IGI Report No LG735553139	FANCY LIGHT YELLOW
EMERALD CUT	VS 2
11.40 X 7.93 X 5.21 MM	65.7%
Carat Weight	62%
Color Grade	Thick
Clarity Grade	Long
Depth	EXCELLENT
Table	EXCELLENT
Graile	SLIGHT
Culet	IGI LG735553139
Polish	
Symmetry	
Fluorescence	
Inscription(s)	

Comments: This Laboratory Grown Diamond was created by Chemical Vapor Deposition (CVD) growth process. Indications of post-growth treatment.