



ELECTRONIC COPY

LG735562437
Report verification at igi.org



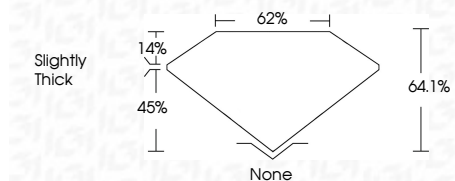
September 20, 2025
IGI Report Number **LG735562437**
Description **LABORATORY GROWN DIAMOND**

Shape and Cutting Style **CUT CORNERED
RECTANGULAR MODIFIED
BRILLIANT**

Measurements **8.40 X 6.26 X 4.01 MM**

GRADING RESULTS

Carat Weight **1.84 CARAT**
Color Grade **E**
Clarity Grade **VS 2**



ADDITIONAL GRADING INFORMATION

Polish **EXCELLENT**
Symmetry **EXCELLENT**
Fluorescence **NONE**

Inscription(s) **IGI LG735562437**

Comments: This Laboratory Grown Diamond was created by Chemical Vapor Deposition (CVD) growth process. Type IIa



IGI



September 20, 2025
IGI Report No LG735562437
CUT CORNERED RECT. MODIFIED BRILLIANT
8.40 X 6.26 X 4.01 MM
1.84 CARAT
E
VS 2
64.1%
62%
Slightly Thick
None
EXCELLENT
EXCELLENT
NONE
IGI LG735562437

Comments: This Laboratory Grown Diamond was created by Chemical Vapor Deposition (CVD) growth process. Type IIa

September 20, 2025
IGI Report Number **LG735562437**
Description **LABORATORY GROWN DIAMOND**
Shape and Cutting Style **CUT CORNERED RECTANGULAR
MODIFIED BRILLIANT**
Measurements **8.40 X 6.26 X 4.01 MM**

GRADING RESULTS

Carat Weight **1.84 CARAT**
Color Grade **E**
Clarity Grade **VS 2**

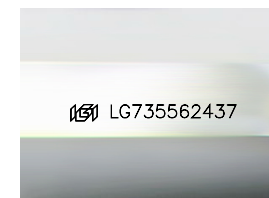
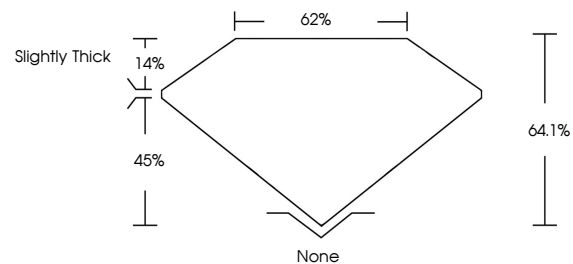
ADDITIONAL GRADING INFORMATION

Polish **EXCELLENT**
Symmetry **EXCELLENT**
Fluorescence **NONE**

Inscription(s) **IGI LG735562437**

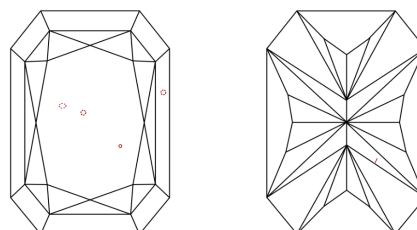
Comments: This Laboratory Grown Diamond was created by Chemical Vapor Deposition (CVD) growth process. Type IIa

PROPORTIONS



Sample Image Used

CLARITY CHARACTERISTICS



KEY TO SYMBOLS

Red symbols indicate internal characteristics.
Green symbols indicate external characteristics.

COLOR

D E F G H I J Faint Very Light Light

CLARITY

IF VS¹⁻² VS¹⁻² SI¹⁻² I¹⁻³

Internally Flawless Very Very Slightly Included Very Slightly Included Slightly Included Included