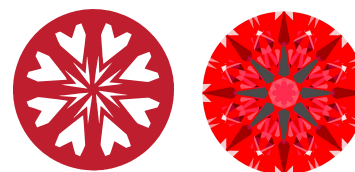




Light Performance Grade: Exceptional



Structured Light Environment Representation



September 22, 2025 IGI Report Number LG735570224 Description LABORATORY GROWN DIAMOND Shape and Cutting Style ROUND BRILLIANT Measurements 9.13 - 9.17 X 5.54 MM GRADING RESULTS Carat Weight 2.81 CARATS Color Grade E Clarity Grade VS 1 Cut Grade IDEAL

ELECTRONIC COPY LABORATORY GROWN DIAMOND REPORT

September 22, 2025 IGI Report Number LG735570224 Description LABORATORY GROWN DIAMOND Shape and Cutting Style ROUND BRILLIANT Measurements 9.13 - 9.17 x 5.54 mm

GRADING RESULTS

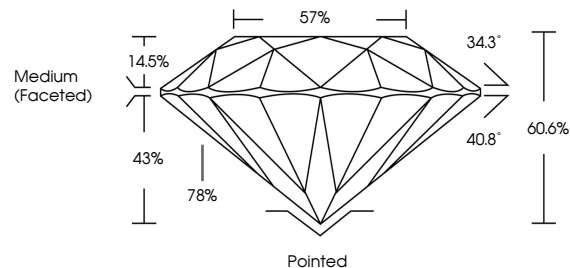
Carat Weight 2.81 CARATS Color Grade E Clarity Grade VS 1 Cut Grade IDEAL

ADDITIONAL GRADING INFORMATION

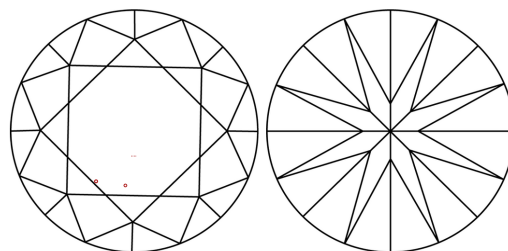
Polish EXCELLENT Symmetry EXCELLENT Fluorescence NONE Inscription(s) IGI LG735570224

Comments: HEARTS & ARROWS This Laboratory Grown Diamond was created by Chemical Vapor Deposition (CVD) growth process. Type IIa

PROPORTIONS

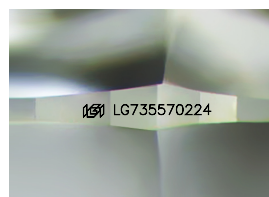


CLARITY CHARACTERISTICS

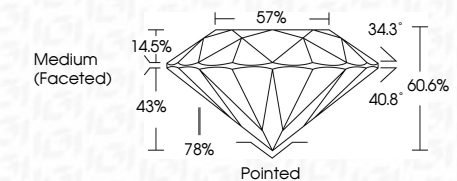


KEY TO SYMBOLS

Red symbols indicate internal characteristics. Green symbols indicate external characteristics.



Sample Image Used



ADDITIONAL GRADING INFORMATION

Polish EXCELLENT Symmetry EXCELLENT Fluorescence NONE Inscription(s) IGI LG735570224 Comments: HEARTS & ARROWS This Laboratory Grown Diamond was created by Chemical Vapor Deposition (CVD) growth process. Type IIa



Summary table of report details including date, report number, description, measurements, grading results, and additional information.