



**ELECTRONIC COPY**

**LABORATORY GROWN DIAMOND REPORT**

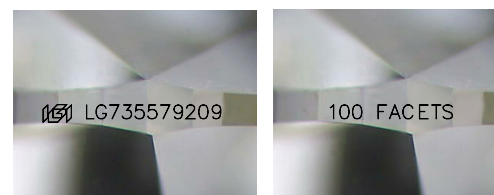
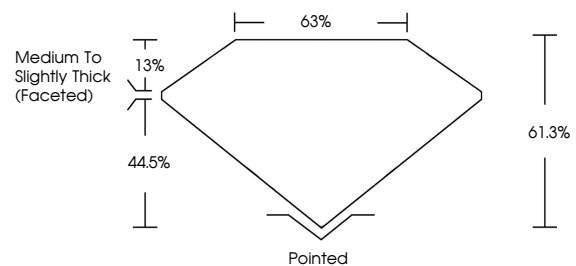
October 3, 2025  
 IGI Report Number **LG735579209**  
 Description **LABORATORY GROWN DIAMOND**  
 Shape and Cutting Style **PEAR MODIFIED BRILLIANT**  
 Measurements **9.22 X 5.64 X 3.46 MM**  
**GRADING RESULTS**  
 Carat Weight **1.07 CARAT**  
 Color Grade **E**  
 Clarity Grade **VS 1**

**ADDITIONAL GRADING INFORMATION**

Polish **VERY GOOD**  
 Symmetry **EXCELLENT**  
 Fluorescence **NONE**  
 Inscription(s) **IGI LG735579209  
100 FACETS**

Comments: This Laboratory Grown Diamond was created by Chemical Vapor Deposition (CVD) growth process. Type IIa

**PROPORTIONS**



Sample Images Used

**COLOR**

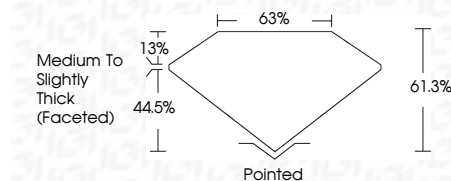
D E F G H I J Faint Very Light Light

**CLARITY**

FL	IF	VS <sup>1-2</sup>	VS <sup>1-2</sup>	SI <sup>1-2</sup>	I <sup>1-3</sup>
Flawless	Internally Flawless	Very Very Slightly Included	Very Slightly Included	Slightly Included	Included



October 3, 2025  
 IGI Report Number **LG735579209**  
 Description **LABORATORY GROWN DIAMOND**  
 Shape and Cutting Style **PEAR MODIFIED BRILLIANT**  
 Measurements **9.22 X 5.64 X 3.46 MM**  
**GRADING RESULTS**  
 Carat Weight **1.07 CARAT**  
 Color Grade **E**  
 Clarity Grade **VS 1**



**ADDITIONAL GRADING INFORMATION**

Polish **VERY GOOD**  
 Symmetry **EXCELLENT**  
 Fluorescence **NONE**  
 Inscription(s) **IGI LG735579209  
100 FACETS**

Comments: This Laboratory Grown Diamond was created by Chemical Vapor Deposition (CVD) growth process. Type IIa



**IGI**



October 3, 2025  
 IGI Report No **LG735579209**  
**PEAR MODIFIED BRILLIANT**  
**9.22 X 5.64 X 3.46 MM**  
 Carat Weight **1.07 CARAT**  
 Color Grade **E**  
 Clarity Grade **VS 1**  
 Table **61.8%**  
 Girdle **65%**  
 Medium to Slightly Thick (Faceted)  
 Culet **Pointed**  
 Polish **VERY GOOD**  
 Symmetry **EXCELLENT**  
 Fluorescence **NONE**  
 Inscription(s) **IGI LG735579209 100 FACETS**  
 Comments: This Laboratory Grown Diamond was created by Chemical Vapor Deposition (CVD) growth process. Type IIa