



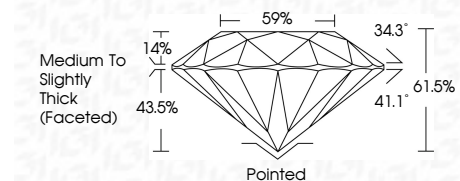
ELECTRONIC COPY

LG735579347 Report verification at igi.org



September 23, 2025 IGI Report Number LG735579347 Description LABORATORY GROWN DIAMOND Shape and Cutting Style ROUND BRILLIANT Measurements 9.30 - 9.36 X 5.75 MM

GRADING RESULTS Carat Weight 3.09 CARATS Color Grade G Clarity Grade VS 1 Cut Grade IDEAL



ADDITIONAL GRADING INFORMATION Polish EXCELLENT Symmetry EXCELLENT Fluorescence NONE Inscription(s) IGI LG735579347 Comments: This Laboratory Grown Diamond was created by Chemical Vapor Deposition (CVD) growth process. Type IIa



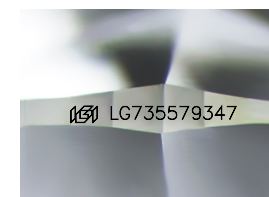
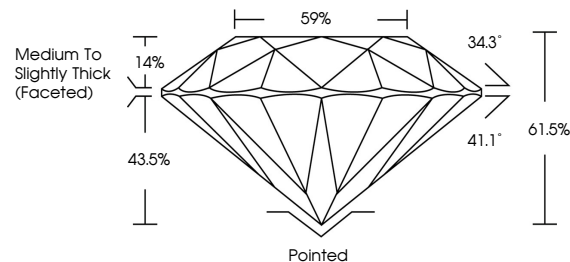
September 23, 2025 IGI Report No LG735579347 ROUND BRILLIANT 9.30 - 9.36 X 5.75 MM 3.09 CARATS G VS 1 IDEAL 61.5% 59% Medium To Slightly Thick (Faceted) Pointed EXCELLENT EXCELLENT NONE IGI LG735579347

September 23, 2025 IGI Report Number LG735579347 Description LABORATORY GROWN DIAMOND Shape and Cutting Style ROUND BRILLIANT Measurements 9.30 - 9.36 X 5.75 MM GRADING RESULTS Carat Weight 3.09 CARATS Color Grade G Clarity Grade VS 1 Cut Grade IDEAL

ADDITIONAL GRADING INFORMATION Polish EXCELLENT Symmetry EXCELLENT Fluorescence NONE Inscription(s) IGI LG735579347

Comments: This Laboratory Grown Diamond was created by Chemical Vapor Deposition (CVD) growth process. Type IIa

PROPORTIONS



Sample Image Used

COLOR

D E F G H I J Faint Very Light Light

CLARITY

IF WS 1-2 VS 1-2 SI 1-2 I 1-3 Internally Flawless Very Very Slightly Included Very Slightly Included Slightly Included Included

