



**ELECTRONIC COPY**

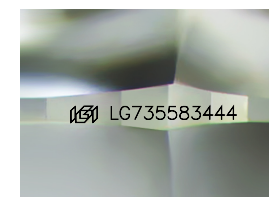
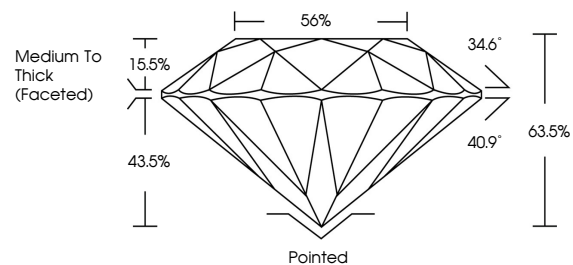
LG735583444  
Report verification at [igi.org](http://igi.org)



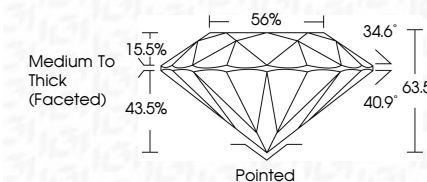
September 25, 2025  
IGI Report Number **LG735583444**  
Description **LABORATORY GROWN DIAMOND**  
Shape and Cutting Style **ROUND BRILLIANT**  
Measurements **7.79 - 7.88 X 4.98 MM**  
**GRADING RESULTS**  
Carat Weight **1.92 CARAT**  
Color Grade **E**  
Clarity Grade **VS 1**  
Cut Grade **EXCELLENT**

September 25, 2025  
IGI Report Number **LG735583444**  
Description **LABORATORY GROWN DIAMOND**  
Shape and Cutting Style **ROUND BRILLIANT**  
Measurements **7.79 - 7.88 X 4.98 MM**  
**GRADING RESULTS**  
Carat Weight **1.92 CARAT**  
Color Grade **E**  
Clarity Grade **VS 1**  
Cut Grade **EXCELLENT**

**PROPORTIONS**



Sample Image Used



**ADDITIONAL GRADING INFORMATION**  
Polish **EXCELLENT**  
Symmetry **EXCELLENT**  
Fluorescence **NONE**  
Inscription(s) **IGI LG735583444**

**COLOR**

D E F G H I J Faint Very Light Light

**CLARITY**

IF	WS <sup>1-2</sup>	VS <sup>1-2</sup>	SI <sup>1-2</sup>	I <sup>1-3</sup>
Internally Flawless	Very Very Slightly Included	Very Slightly Included	Slightly Included	Included

**ADDITIONAL GRADING INFORMATION**

Polish **EXCELLENT**  
Symmetry **EXCELLENT**  
Fluorescence **NONE**  
Inscription(s) **IGI LG735583444**



**IGI**

September 25, 2025  
IGI Report No **LG735583444**  
**ROUND BRILLIANT**  
1.92 CARAT  
Color Grade **E**  
Clarity Grade **VS 1**  
Depth **63.5%**  
Table **56%**  
Girdle **Medium To Thick (Faceted)**  
Culet **Pointed**  
Polish **EXCELLENT**  
Symmetry **EXCELLENT**  
Fluorescence **NONE**  
Inscriptions(s) **IGI LG735583444**