



**ELECTRONIC COPY**

LG735584131  
Report verification at igi.org



November 25, 2025

IGI Report Number **LG735584131**

Description **LABORATORY GROWN DIAMOND**

Shape and Cutting Style **SQUARE CUSHION MODIFIED  
BRILLIANT**

Measurements **5.58 X 5.47 X 3.94 MM**

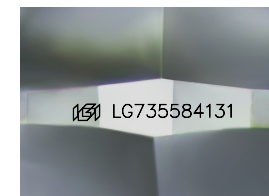
**GRADING RESULTS**

Carat Weight **0.97 CARAT**

Color Grade **D**

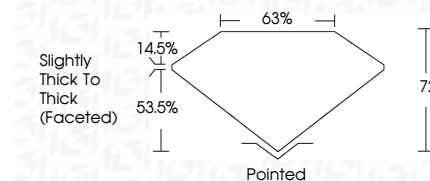
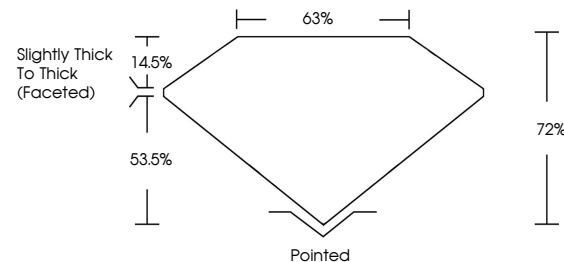
Clarity Grade **VS 1**

Cut Grade **VERY GOOD**



Sample Image Used

**PROPORTIONS**



November 25, 2025  
IGI Report Number **LG735584131**

Description **LABORATORY GROWN DIAMOND**

Shape and Cutting Style **SQUARE CUSHION MODIFIED  
BRILLIANT**

Measurements **5.58 X 5.47 X 3.94 MM**

**GRADING RESULTS**

Carat Weight **0.97 CARAT**

Color Grade **D**

Clarity Grade **VS 1**

Cut Grade **VERY GOOD**

**ADDITIONAL GRADING INFORMATION**

Polish **EXCELLENT**

Symmetry **EXCELLENT**

Fluorescence **NONE**

Inscription(s) **IGI LG735584131**

Comments: This Laboratory Grown Diamond was created by Chemical Vapor Deposition (CVD) growth process. Type IIa

**COLOR**

D E F G H I J Faint Very Light Light

**CLARITY**

FL IF VS<sup>1-2</sup> VS<sup>1-2</sup> SI<sup>1-2</sup> I<sup>1-3</sup>

Flawless Internally Flawless Very Very Slightly Included Very Slightly Included Slightly Included Included

**ADDITIONAL GRADING INFORMATION**

Polish **EXCELLENT**

Symmetry **EXCELLENT**

Fluorescence **NONE**

Inscription(s) **IGI LG735584131**

Comments: This Laboratory Grown Diamond was created by Chemical Vapor Deposition (CVD) growth process. Type IIa



November 25, 2025	IGI Report No LG735584131	<b>SQUARE CUSHION MODIFIED BRILLIANT</b>
5.58 X 5.47 X 3.94 MM	0.97 CARAT	D
Color Grade	VS 1	VERY GOOD
Clarity Grade	72%	68%
Depth	Slightly Thick To Thick (Faceted)	Pointed
Table	EXCELLENT	EXCELLENT
Girdle	EXCELLENT	NONE
Culet	EXCELLENT	IGI LG735584131
Polish	EXCELLENT	
Symmetry	EXCELLENT	
Fluorescence	NONE	
Inscriptions(s)		

Comments: This Laboratory Grown Diamond was created by Chemical Vapor Deposition (CVD) growth process. Type IIa