



**ELECTRONIC COPY**

LG735585556  
Report verification at igi.org



November 19, 2025

IGI Report Number **LG735585556**

Description **LABORATORY GROWN DIAMOND**

Shape and Cutting Style **SQUARE CUSHION MODIFIED  
BRILLIANT**

Measurements **7.14 X 7.04 X 4.79 MM**

**GRADING RESULTS**

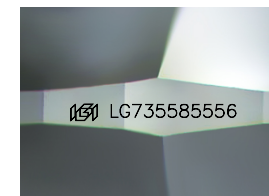
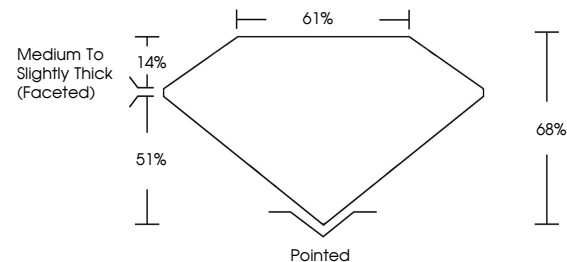
Carat Weight **1.91 CARAT**

Color Grade **G**

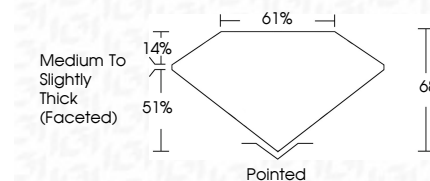
Clarity Grade **VVS 2**

Cut Grade **EXCELLENT**

**PROPORTIONS**



Sample Image Used



**ADDITIONAL GRADING INFORMATION**

Polish **EXCELLENT**

Symmetry **VERY GOOD**

Fluorescence **NONE**

Inscription(s) **IGI LG735585556**

Comments: This Laboratory Grown Diamond was created by Chemical Vapor Deposition (CVD) growth process. Type IIa

**COLOR**

D E F G H I J Faint Very Light Light

**CLARITY**

FL IF VVS<sup>1-2</sup> VS<sup>1-2</sup> SI<sup>1-2</sup> I<sup>1-3</sup>

Flawless Internally Flawless Very Very Slightly Included Very Slightly Included Slightly Included Included



**IGI**



November 19, 2025  
IGI Report No LG735585556  
**SQUARE CUSHION MODIFIED BRILLIANT**

7.14 X 7.04 X 4.79 MM

Carat Weight 1.91 CARAT  
Color Grade G  
Clarity Grade VVS 2  
Cut Grade EXCELLENT  
Depth 68%  
Table 61%  
Girdle Medium To Slightly Thick (Faceted)

Culet Pointed  
Polish EXCELLENT  
Symmetry VERY GOOD  
Fluorescence NONE  
Inscriptions(s) IGI LG735585556

Comments: This Laboratory Grown Diamond was created by Chemical Vapor Deposition (CVD) growth process. Type IIa