



ELECTRONIC COPY

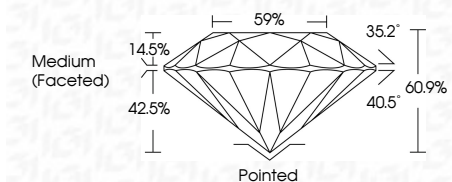
LG735592078
Report verification at igi.org



September 20, 2025
IGI Report Number LG735592078
Description LABORATORY GROWN DIAMOND
Shape and Cutting Style ROUND BRILLIANT
Measurements 8.74 - 8.78 X 5.33 MM

GRADING RESULTS

Carat Weight 2.53 CARATS
Color Grade F
Clarity Grade VVS 2
Cut Grade IDEAL

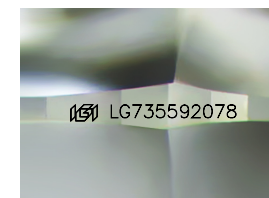


ADDITIONAL GRADING INFORMATION

Polish EXCELLENT
Symmetry EXCELLENT
Fluorescence NONE
Inscription(s) IGI LG735592078
Comments: This Laboratory Grown Diamond was created by Chemical Vapor Deposition (CVD) growth process. Type IIa

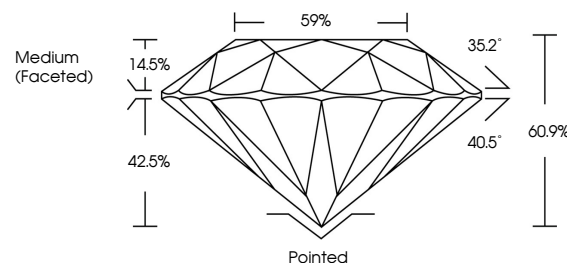


September 20, 2025
IGI Report No LG735592078
ROUND BRILLIANT
8.74 - 8.78 X 5.33 MM
2.53 CARATS
Color Grade F
Clarity Grade VVS 2
Cut Grade IDEAL
Depth 60.9%
Table 59%
Girdle Medium (Faceted)
Culet Pointed
Polish EXCELLENT
Symmetry EXCELLENT
Fluorescence NONE
Inscription(s) IGI LG735592078
Comments: This Laboratory Grown Diamond was created by Chemical Vapor Deposition (CVD) growth process. Type IIa

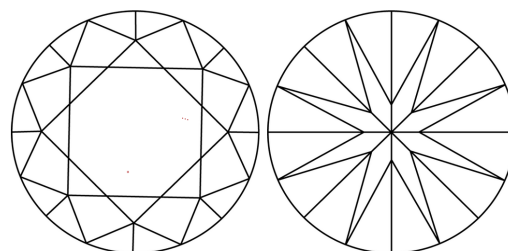


Sample Image Used

PROPORTIONS



CLARITY CHARACTERISTICS



KEY TO SYMBOLS

Red symbols indicate internal characteristics.
Green symbols indicate external characteristics.

COLOR

D E F G H I J Faint Very Light Light

CLARITY

IF WS 1-2 VS 1-2 SI 1-2 I 1-3
Internally Flawless Very Very Slightly Included Very Slightly Included Slightly Included Included

