



ELECTRONIC COPY

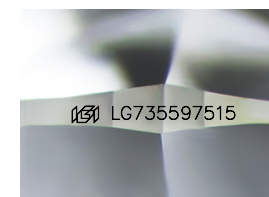
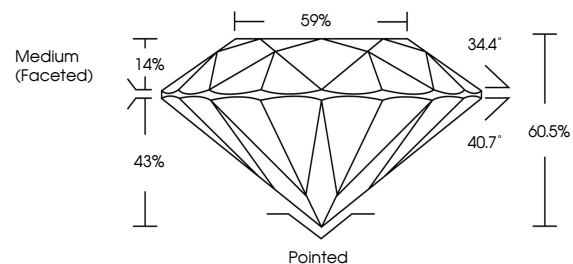
LG735597515
Report verification at igi.org



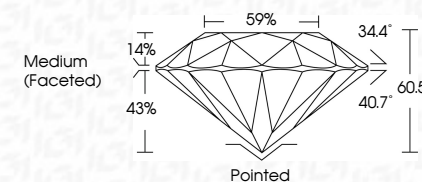
September 23, 2025
IGI Report Number **LG735597515**
Description **LABORATORY GROWN DIAMOND**
Shape and Cutting Style **ROUND BRILLIANT**
Measurements **10.50 - 10.56 X 6.38 MM**
GRADING RESULTS
Carat Weight **4.37 CARATS**
Color Grade **E**
Clarity Grade **VS 1**
Cut Grade **IDEAL**

September 23, 2025
IGI Report Number **LG735597515**
Description **LABORATORY GROWN DIAMOND**
Shape and Cutting Style **ROUND BRILLIANT**
Measurements **10.50 - 10.56 X 6.38 MM**
GRADING RESULTS
Carat Weight **4.37 CARATS**
Color Grade **E**
Clarity Grade **VS 1**
Cut Grade **IDEAL**

PROPORTIONS



Sample Image Used



ADDITIONAL GRADING INFORMATION
Polish **EXCELLENT**
Symmetry **EXCELLENT**
Fluorescence **NONE**
Inscription(s) **IGI LG735597515**

Comments: This Laboratory Grown Diamond was created by Chemical Vapor Deposition (CVD) growth process. Type IIa

COLOR

D E F G H I J Faint Very Light Light

CLARITY

IF	VS ¹⁻²	VS ¹⁻²	SI ¹⁻²	I ¹⁻³
Internally Flawless	Very Very Slightly Included	Very Slightly Included	Slightly Included	Included

ADDITIONAL GRADING INFORMATION

Polish **EXCELLENT**
Symmetry **EXCELLENT**
Fluorescence **NONE**
Inscription(s) **IGI LG735597515**
Comments: This Laboratory Grown Diamond was created by Chemical Vapor Deposition (CVD) growth process. Type IIa



IGI

September 23, 2025
IGI Report No **LG735597515**
ROUND BRILLIANT
10.50 - 10.56 X 6.38 MM
Carat Weight **4.37 CARATS**
Color Grade **E**
Clarity Grade **VS 1**
Depth **60.5%**
Table **59%**
Girdle **Medium (Faceted)**
Culet **Pointed**
Polish **EXCELLENT**
Symmetry **EXCELLENT**
Fluorescence **NONE**
Inscriptions(s) **IGI LG735597515**
Comments: This Laboratory Grown Diamond was created by Chemical Vapor Deposition (CVD) growth process. Type IIa