



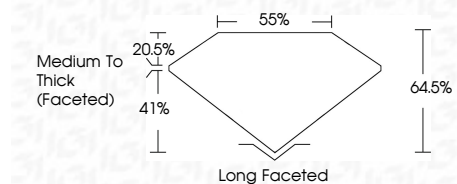
ELECTRONIC COPY

LG737507561
Report verification at igi.org



November 14, 2025
IGI Report Number **LG737507561**
Description **LABORATORY GROWN DIAMOND**
Shape and Cutting Style **CUSHION ANTIQUE BRILLIANT**
Measurements **8.50 X 6.17 X 3.98 MM**

GRADING RESULTS
Carat Weight **1.59 CARAT**
Color Grade **D**
Clarity Grade **VVS 1**



ADDITIONAL GRADING INFORMATION
Polish **EXCELLENT**
Symmetry **EXCELLENT**
Fluorescence **NONE**
Inscription(s) **IGI LG737507561**
Comments: As Grown - No indication of post-growth treatment.
This Laboratory Grown Diamond was created by High Pressure High Temperature (HPHT) growth process.
Type II



November 14, 2025
IGI Report No LG737507561
CUSHION ANTIQUE BRILLIANT
8.50 X 6.17 X 3.98 MM
1.59 CARAT
D
VVS 1
64.5%
41%
Medium To Thick (Faceted)
Long Faceted
EXCELLENT
EXCELLENT
NONE
IGI LG737507561
Comments: As Grown - No indication of post-growth treatment.
This Laboratory Grown Diamond was created by High Pressure High Temperature (HPHT) growth process.
Type II

LABORATORY GROWN DIAMOND REPORT

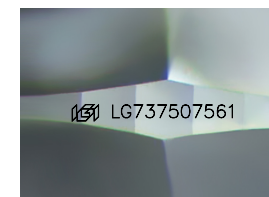
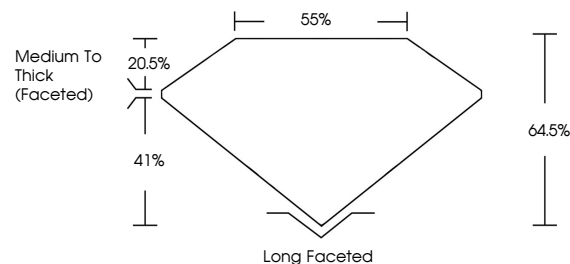
November 14, 2025
IGI Report Number **LG737507561**
Description **LABORATORY GROWN DIAMOND**
Shape and Cutting Style **CUSHION ANTIQUE BRILLIANT**
Measurements **8.50 X 6.17 X 3.98 MM**

GRADING RESULTS
Carat Weight **1.59 CARAT**
Color Grade **D**
Clarity Grade **VVS 1**

ADDITIONAL GRADING INFORMATION
Polish **EXCELLENT**
Symmetry **EXCELLENT**
Fluorescence **NONE**
Inscription(s) **IGI LG737507561**

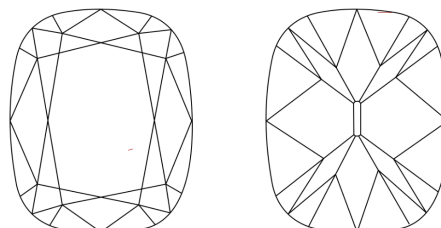
Comments: As Grown - No indication of post-growth treatment.
This Laboratory Grown Diamond was created by High Pressure High Temperature (HPHT) growth process.
Type II

PROPORTIONS



Sample Image Used

CLARITY CHARACTERISTICS



KEY TO SYMBOLS

Red symbols indicate internal characteristics.
Green symbols indicate external characteristics.

COLOR

D E F G H I J Faint Very Light Light

CLARITY

FL	IF	VVS ¹⁻²	VS ¹⁻²	SI ¹⁻²	I ¹⁻³
Flawless	Internally Flawless	Very Very Slightly Included	Very Slightly Included	Slightly Included	Included

