



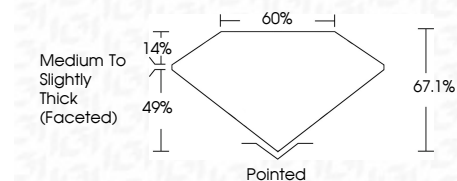
ELECTRONIC COPY

LG737521261 Report verification at igi.org



September 24, 2025 IGI Report Number LG737521261 Description LABORATORY GROWN DIAMOND Shape and Cutting Style SQUARE CUSHION MODIFIED BRILLIANT Measurements 9.04 X 9.02 X 6.05 MM

GRADING RESULTS Carat Weight 4.21 CARATS Color Grade E Clarity Grade VVS 1



ADDITIONAL GRADING INFORMATION Polish EXCELLENT Symmetry EXCELLENT Fluorescence NONE Inscription(s) LG737521261 Comments: As Grown - No indication of post-growth treatment. This Laboratory Grown Diamond was created by High Pressure High Temperature (HPHT) growth process. Type II



September 24, 2025 IGI Report No LG737521261 SQUARE CUSHION MODIFIED BRILLIANT 9.04 X 9.02 X 6.05 MM 4.21 CARATS E VVS 1 67.1% 60% Medium to Slightly Thick (Faceted) Pointed EXCELLENT EXCELLENT NONE LG737521261

Comments: As Grown - No indication of post-growth treatment. This Laboratory Grown Diamond was created by High Pressure High Temperature (HPHT) growth process. Type II

LABORATORY GROWN DIAMOND REPORT

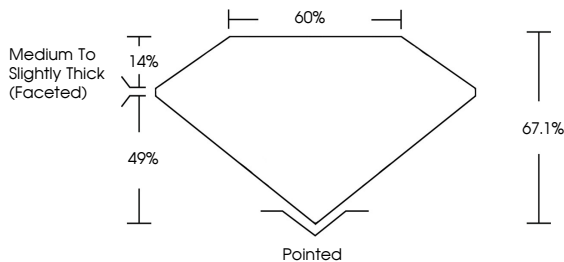
September 24, 2025 IGI Report Number LG737521261 Description LABORATORY GROWN DIAMOND Shape and Cutting Style SQUARE CUSHION MODIFIED BRILLIANT Measurements 9.04 X 9.02 X 6.05 MM

GRADING RESULTS Carat Weight 4.21 CARATS Color Grade E Clarity Grade VVS 1

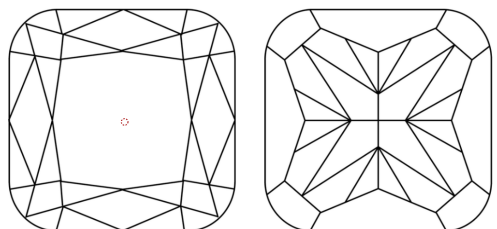
ADDITIONAL GRADING INFORMATION Polish EXCELLENT Symmetry EXCELLENT Fluorescence NONE Inscription(s) LG737521261

Comments: As Grown - No indication of post-growth treatment. This Laboratory Grown Diamond was created by High Pressure High Temperature (HPHT) growth process. Type II

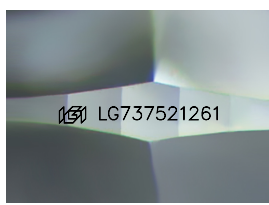
PROPORTIONS



CLARITY CHARACTERISTICS



KEY TO SYMBOLS Red symbols indicate internal characteristics. Green symbols indicate external characteristics.



Sample Image Used

COLOR

Table with columns D, E, F, G, H, I, J, Faint, Very Light, Light

CLARITY

Table with columns IF, VS 1-2, VS 1-2, SI 1-2, I 1-3, Internally Flawless, Very Very Slightly Included, Very Slightly Included, Slightly Included, Included

