



ELECTRONIC COPY

LG737521668
Report verification at igi.org



October 3, 2025
IGI Report Number **LG737521668**
Description **LABORATORY GROWN DIAMOND**
Shape and Cutting Style **CUT CORNERED SQUARE
MODIFIED BRILLIANT**
Measurements **8.12 X 8.05 X 5.38 MM**
GRADING RESULTS
Carat Weight **3.01 CARATS**
Color Grade **FANCY INTENSE PINK**
Clarity Grade **VS 2**

LABORATORY GROWN DIAMOND REPORT

October 3, 2025
IGI Report Number **LG737521668**
Description **LABORATORY GROWN DIAMOND**
Shape and Cutting Style **CUT CORNERED SQUARE
MODIFIED BRILLIANT**
Measurements **8.12 X 8.05 X 5.38 MM**

GRADING RESULTS

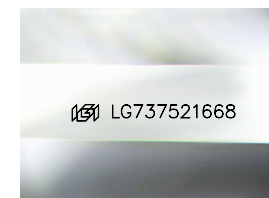
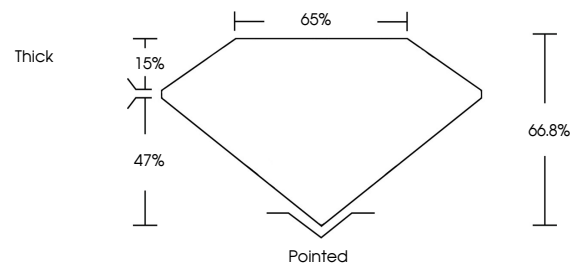
Carat Weight **3.01 CARATS**
Color Grade **FANCY INTENSE PINK**
Clarity Grade **VS 2**

ADDITIONAL GRADING INFORMATION

Polish **EXCELLENT**
Symmetry **EXCELLENT**
Fluorescence **STRONG**
Inscription(s) **IGI LG737521668**

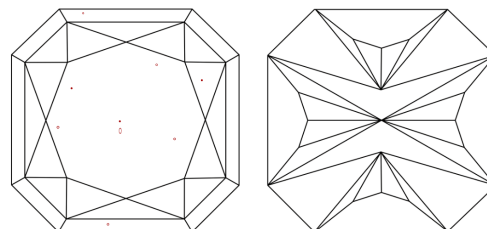
Comments: This Laboratory Grown Diamond was created by Chemical Vapor Deposition (CVD) growth process. Indications of post-growth treatment.

PROPORTIONS



Sample Image Used

CLARITY CHARACTERISTICS



KEY TO SYMBOLS

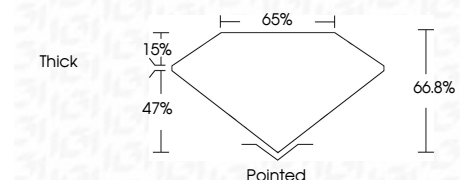
Red symbols indicate internal characteristics.
Green symbols indicate external characteristics.

COLOR

D E F G H I J Faint Very Light Light

CLARITY

IF	VS ¹⁻²	VS ¹⁻²	SI ¹⁻²	I ¹⁻³
Internally Flawless	Very Very Slightly Included	Very Slightly Included	Slightly Included	Included



ADDITIONAL GRADING INFORMATION

Polish **EXCELLENT**
Symmetry **EXCELLENT**
Fluorescence **STRONG**
Inscription(s) **IGI LG737521668**
Comments: This Laboratory Grown Diamond was created by Chemical Vapor Deposition (CVD) growth process. Indications of post-growth treatment.



October 3, 2025
IGI Report No LG737521668
CUT CORNERED SQUARE MODIFIED BRILLIANT
8.12 X 8.05 X 5.38 MM
Carat Weight **3.01 CARATS**
Color Grade **FANCY INTENSE PINK**
Clarity Grade **VS 2**
Depth **66.8%**
Table **65%**
Girdle **Thick**
Culet **Pointed**
Polish **EXCELLENT**
Symmetry **EXCELLENT**
Fluorescence **STRONG**
Inscription(s) **IGI LG737521668**
Comments: This Laboratory Grown Diamond was created by Chemical Vapor Deposition (CVD) growth process. Indications of post-growth treatment.