



ELECTRONIC COPY

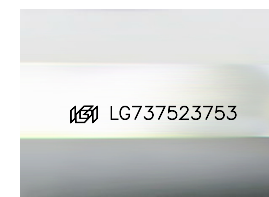
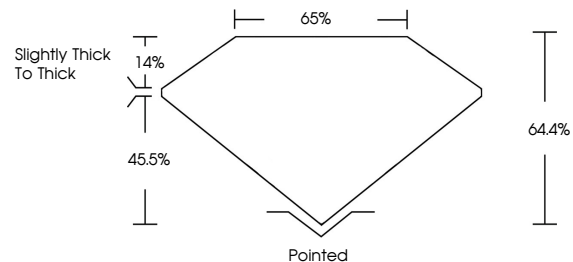
LG737523753
Report verification at igi.org



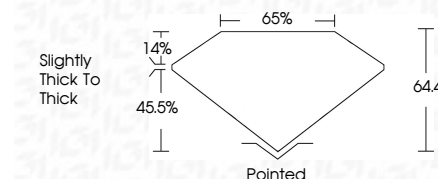
October 8, 2025
IGI Report Number **LG737523753**
Description **LABORATORY GROWN DIAMOND**
Shape and Cutting Style **CUT CORNERED
RECTANGULAR MODIFIED
BRILLIANT**
Measurements **7.03 X 5.05 X 3.25 MM**
GRADING RESULTS
Carat Weight **1.01 CARAT**
Color Grade **FANCY DEEP GREEN**
Clarity Grade **VS 2**

October 8, 2025
IGI Report Number **LG737523753**
Description **LABORATORY GROWN DIAMOND**
Shape and Cutting Style **CUT CORNERED RECTANGULAR
MODIFIED BRILLIANT**
Measurements **7.03 X 5.05 X 3.25 MM**
GRADING RESULTS
Carat Weight **1.01 CARAT**
Color Grade **FANCY DEEP GREEN**
Clarity Grade **VS 2**

PROPORTIONS



Sample Image Used



ADDITIONAL GRADING INFORMATION

Polish **VERY GOOD**
Symmetry **VERY GOOD**
Fluorescence **VERY SLIGHT**
Inscription(s) **IGI LG737523753**

Comments: This Laboratory Grown Diamond was created by Chemical Vapor Deposition (CVD) growth process. Indications of post-growth treatment.

ADDITIONAL GRADING INFORMATION

Polish **VERY GOOD**
Symmetry **VERY GOOD**
Fluorescence **VERY SLIGHT**
Inscription(s) **IGI LG737523753**
Comments: This Laboratory Grown Diamond was created by Chemical Vapor Deposition (CVD) growth process. Indications of post-growth treatment.

COLOR

D E F G H I J Faint Very Light Light

CLARITY

FL	IF	VS ¹⁻²	VS ¹⁻²	SI ¹⁻²	I ¹⁻³
Flawless	Internally Flawless	Very Very Slightly Included	Very Slightly Included	Slightly Included	Included



IGI



October 8, 2025
IGI Report No **LG737523753**
CUT CORNERED RECT. MODIFIED BRILLIANT
7.03 X 5.05 X 3.25 MM
Carat Weight **1.01 CARAT**
Color Grade **FANCY DEEP GREEN**
Clarity Grade **VS 2**
Depth **64.4%**
Table **14%**
Girdle **Slightly Thick To Thick**
Culet **Pointed**
Polish **VERY GOOD**
Symmetry **VERY GOOD**
Fluorescence **VERY SLIGHT**
Inscription(s) **IGI LG737523753**

Comments: This Laboratory Grown Diamond was created by Chemical Vapor Deposition (CVD) growth process. Indications of post-growth treatment.