



**ELECTRONIC COPY**

LG737536183  
Report verification at igi.org



September 24, 2025

IGI Report Number **LG737536183**

Description **LABORATORY GROWN DIAMOND**

Shape and Cutting Style **ROUND BRILLIANT**

Measurements **9.33 - 9.36 X 5.74 MM**

**GRADING RESULTS**

Carat Weight **3.09 CARATS**

Color Grade **F**

Clarity Grade **VVS 2**

Cut Grade **IDEAL**

September 24, 2025  
IGI Report Number **LG737536183**  
Description **LABORATORY GROWN DIAMOND**  
Shape and Cutting Style **ROUND BRILLIANT**  
Measurements **9.33 - 9.36 X 5.74 MM**

**GRADING RESULTS**

Carat Weight **3.09 CARATS**

Color Grade **F**

Clarity Grade **VVS 2**

Cut Grade **IDEAL**

**ADDITIONAL GRADING INFORMATION**

Polish **EXCELLENT**

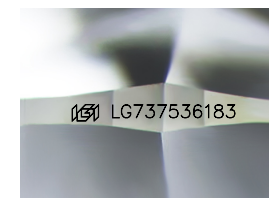
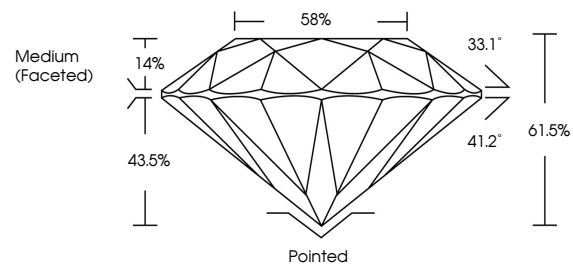
Symmetry **EXCELLENT**

Fluorescence **NONE**

Inscription(s) **LG737536183**

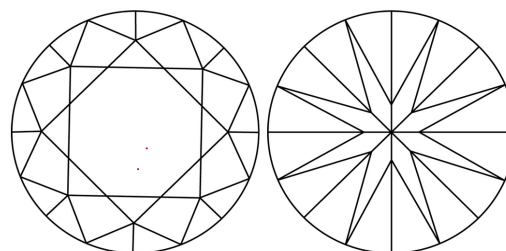
Comments: This Laboratory Grown Diamond was created by Chemical Vapor Deposition (CVD) growth process.  
Type IIa

**PROPORTIONS**



Sample Image Used

**CLARITY CHARACTERISTICS**



**KEY TO SYMBOLS**

Red symbols indicate internal characteristics.  
Green symbols indicate external characteristics.

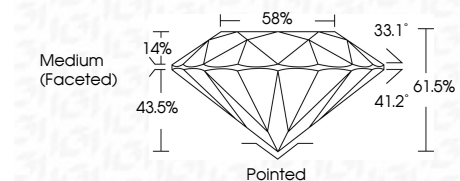
**COLOR**

D E F G H I J Faint Very Light Light

**CLARITY**

IF VS<sup>1-2</sup> VS<sup>1-2</sup> SI<sup>1-2</sup> I<sup>1-3</sup>

Internally Flawless Very Very Slightly Included Very Slightly Included Slightly Included Included



**ADDITIONAL GRADING INFORMATION**

Polish **EXCELLENT**

Symmetry **EXCELLENT**

Fluorescence **NONE**

Inscription(s) **LG737536183**

Comments: This Laboratory Grown Diamond was created by Chemical Vapor Deposition (CVD) growth process.  
Type IIa



**IGI**



September 24, 2025	IGI Report No LG737536183	3.09 CARATS	F	Pointed	EXCELLENT	EXCELLENT	NONE	LG737536183
ROUND BRILLIANT	9.33 - 9.36 X 5.74 MM	Color Grade	VVS 2	Medium (Faceted)	IDEAL	EXCELLENT	NONE	
		Clarity Grade	6.05%		61.5%			
		Depth	58%					
		Table						
		Girdle						
		Culet						
		Polish						
		Symmetry						
		Fluorescence						
		Inscription(s)						
		Comments:						
		This Laboratory Grown Diamond was created by Chemical Vapor Deposition (CVD) growth process. Type IIa						