



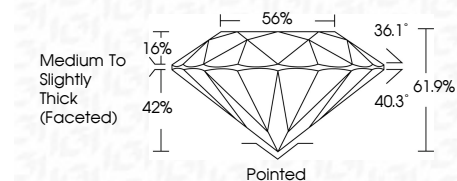
ELECTRONIC COPY

LG737542891
Report verification at igi.org



September 24, 2025
IGI Report Number LG737542891
Description LABORATORY GROWN DIAMOND
Shape and Cutting Style ROUND BRILLIANT
Measurements 7.17 - 7.23 X 4.46 MM

GRADING RESULTS
Carat Weight 1.44 CARAT
Color Grade F
Clarity Grade VS 2
Cut Grade IDEAL

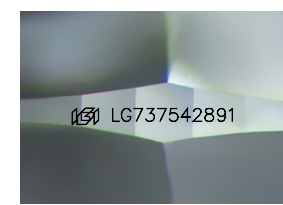
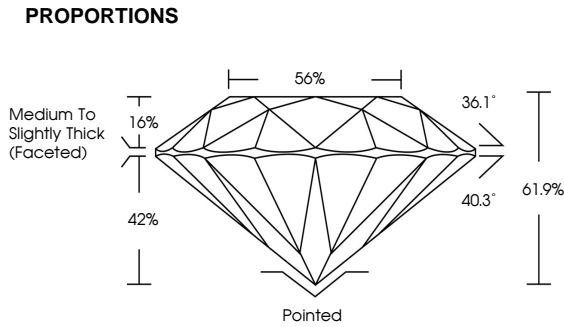


ADDITIONAL GRADING INFORMATION
Polish EXCELLENT
Symmetry EXCELLENT
Fluorescence NONE
Inscription(s) IGI LG737542891
Comments: This Laboratory Grown Diamond was created by Chemical Vapor Deposition (CVD) growth process. Type IIa



September 24, 2025
IGI Report No LG737542891
ROUND BRILLIANT
1.44 CARAT F
7.17 - 7.23 X 4.46 MM
Color Grade VS 2
Clarity Grade IDEAL
Depth 61.9%
Table 56%
Medium To Slightly Thick (Faceted)
Pointed
Polish EXCELLENT
Symmetry EXCELLENT
Fluorescence NONE
Inscription(s) IGI LG737542891
Comments: This Laboratory Grown Diamond was created by Chemical Vapor Deposition (CVD) growth process. Type IIa

September 24, 2025
IGI Report Number LG737542891
Description LABORATORY GROWN DIAMOND
Shape and Cutting Style ROUND BRILLIANT
Measurements 7.17 - 7.23 X 4.46 MM
GRADING RESULTS
Carat Weight 1.44 CARAT
Color Grade F
Clarity Grade VS 2
Cut Grade IDEAL



Sample Image Used

Table with 5 columns: D, E, F, G, H, I, J, Faint, Very Light, Light

Table with 5 columns: IF, VS 1-2, VS 1-2, SI 1-2, I 1-3
Internally Flawless, Very Very Slightly Included, Very Slightly Included, Slightly Included, Included

