



ELECTRONIC COPY

LG737545489
Report verification at igi.org



September 25, 2025

IGI Report Number **LG737545489**

Description **LABORATORY GROWN DIAMOND**

Shape and Cutting Style **ROUND BRILLIANT**

Measurements **6.45 - 6.49 X 3.88 MM**

GRADING RESULTS

Carat Weight **1.00 CARAT**

Color Grade **D**

Clarity Grade **VVS 2**

Cut Grade **EXCELLENT**

September 25, 2025
IGI Report Number **LG737545489**
Description **LABORATORY GROWN DIAMOND**
Shape and Cutting Style **ROUND BRILLIANT**
Measurements **6.45 - 6.49 X 3.88 MM**

GRADING RESULTS

Carat Weight **1.00 CARAT**

Color Grade **D**

Clarity Grade **VVS 2**

Cut Grade **EXCELLENT**

ADDITIONAL GRADING INFORMATION

Polish **EXCELLENT**

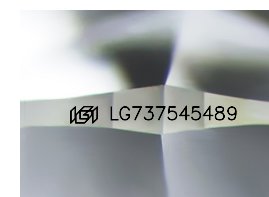
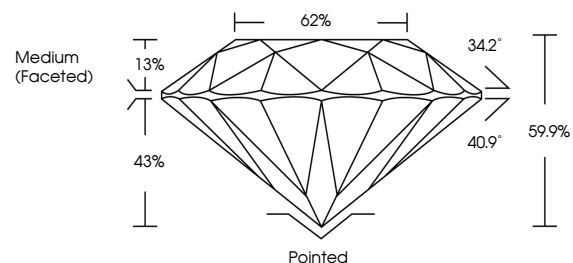
Symmetry **EXCELLENT**

Fluorescence **NONE**

Inscription(s) **IGI LG737545489**

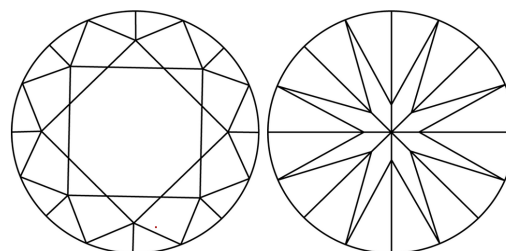
Comments: This Laboratory Grown Diamond was created by Chemical Vapor Deposition (CVD) growth process.
Type IIa

PROPORTIONS



Sample Image Used

CLARITY CHARACTERISTICS



KEY TO SYMBOLS

Red symbols indicate internal characteristics.
Green symbols indicate external characteristics.

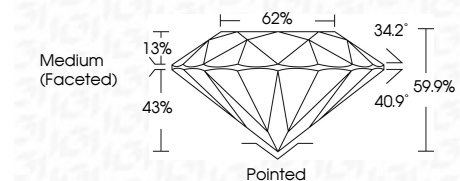
COLOR

D E F G H I J Faint Very Light Light

CLARITY

IF WS¹⁻² VS¹⁻² SI¹⁻² I¹⁻³

Internally Flawless Very Very Slightly Included Very Slightly Included Slightly Included Included



ADDITIONAL GRADING INFORMATION

Polish **EXCELLENT**

Symmetry **EXCELLENT**

Fluorescence **NONE**

Inscription(s) **IGI LG737545489**

Comments: This Laboratory Grown Diamond was created by Chemical Vapor Deposition (CVD) growth process.
Type IIa



IGI



September 25, 2025	1.00 CARAT	D	EXCELLENT	EXCELLENT	EXCELLENT	None	IGI LG737545489
IGI Report No LG737545489	6.45 - 6.49 X 3.88 MM	VVS 2	EXCELLENT	EXCELLENT	EXCELLENT	NONE	IGI LG737545489
ROUND BRILLIANT							
Carat Weight	1.00 CARAT						
Color Grade	D						
Clarity Grade	VVS 2						
Cut Grade	EXCELLENT						
Depth	59.9%						
Table	62%						
Girdle	Medium (Faceted)						
Culet	Pointed						
Polish	EXCELLENT						
Symmetry	EXCELLENT						
Fluorescence	NONE						
Inscription(s)	IGI LG737545489						

Comments: This Laboratory Grown Diamond was created by Chemical Vapor Deposition (CVD) growth process.
Type IIa