



**ELECTRONIC COPY**

LG737545562  
Report verification at igi.org



September 24, 2025

IGI Report Number **LG737545562**

Description **LABORATORY GROWN DIAMOND**

Shape and Cutting Style **ROUND BRILLIANT**

Measurements **6.50 - 6.53 X 4.00 MM**

**GRADING RESULTS**

Carat Weight **1.03 CARAT**

Color Grade **D**

Clarity Grade **VVS 2**

Cut Grade **IDEAL**

September 24, 2025  
IGI Report Number **LG737545562**  
Description **LABORATORY GROWN DIAMOND**  
Shape and Cutting Style **ROUND BRILLIANT**  
Measurements **6.50 - 6.53 X 4.00 MM**

**GRADING RESULTS**

Carat Weight **1.03 CARAT**

Color Grade **D**

Clarity Grade **VVS 2**

Cut Grade **IDEAL**

**ADDITIONAL GRADING INFORMATION**

Polish **EXCELLENT**

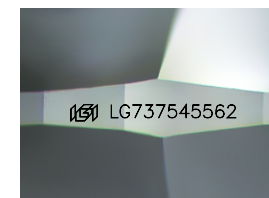
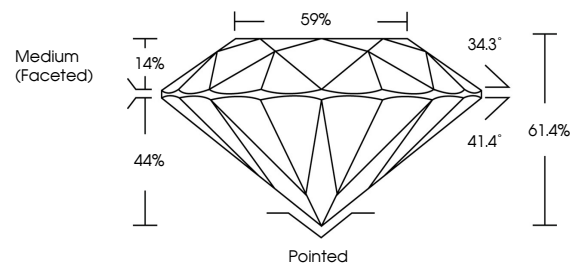
Symmetry **EXCELLENT**

Fluorescence **NONE**

Inscription(s) **LG737545562**

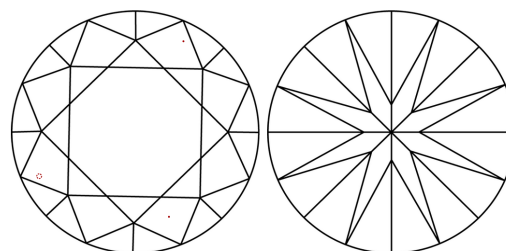
Comments: This Laboratory Grown Diamond was created by Chemical Vapor Deposition (CVD) growth process.  
Type IIa

**PROPORTIONS**



Sample Image Used

**CLARITY CHARACTERISTICS**



**KEY TO SYMBOLS**

Red symbols indicate internal characteristics.  
Green symbols indicate external characteristics.

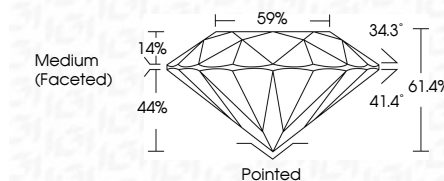
**COLOR**

D E F G H I J Faint Very Light Light

**CLARITY**

IF WS<sup>1-2</sup> VS<sup>1-2</sup> SI<sup>1-2</sup> I<sup>1-3</sup>

Internally Flawless Very Very Slightly Included Very Slightly Included Slightly Included Included



**ADDITIONAL GRADING INFORMATION**

Polish **EXCELLENT**

Symmetry **EXCELLENT**

Fluorescence **NONE**

Inscription(s) **LG737545562**

Comments: This Laboratory Grown Diamond was created by Chemical Vapor Deposition (CVD) growth process.  
Type IIa



**IGI**



|                           |                  |                 |
|---------------------------|------------------|-----------------|
| September 24, 2025        | 1.03 CARAT       | Pointed         |
| IGI Report No LG737545562 | D                | EXCELLENT       |
| ROUND BRILLIANT           | VVS 2            | EXCELLENT       |
| 6.50 - 6.53 X 4.00 MM     | IDEAL            | NONE            |
| Carat Weight              | 61.4%            | NONE            |
| Color Grade               | 59%              | IGI LG737545562 |
| Clarity Grade             | Medium (Faceted) |                 |
| Cut Grade                 |                  |                 |
| Depth                     |                  |                 |
| Table                     |                  |                 |
| Graile                    |                  |                 |
| Polish                    |                  |                 |
| Symmetry                  |                  |                 |
| Fluorescence              |                  |                 |
| Inscriptions(s)           |                  |                 |

Comments: This Laboratory Grown Diamond was created by Chemical Vapor Deposition (CVD) growth process.  
Type IIa