



**ELECTRONIC COPY**

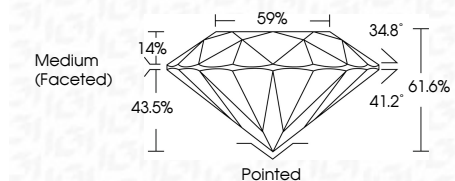
LG737546467  
Report verification at igi.org



September 25, 2025  
IGI Report Number **LG737546467**  
Description **LABORATORY GROWN DIAMOND**  
Shape and Cutting Style **ROUND BRILLIANT**  
Measurements **9.32 - 9.35 X 5.75 MM**

**GRADING RESULTS**

Carat Weight **3.10 CARATS**  
Color Grade **F**  
Clarity Grade **VVS 2**  
Cut Grade **IDEAL**

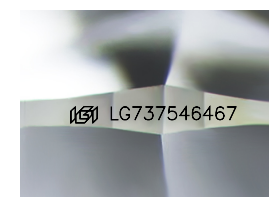


**ADDITIONAL GRADING INFORMATION**

Polish **EXCELLENT**  
Symmetry **EXCELLENT**  
Fluorescence **NONE**  
Inscription(s) **IGI LG737546467**  
Comments: This Laboratory Grown Diamond was created by Chemical Vapor Deposition (CVD) growth process. Type IIa

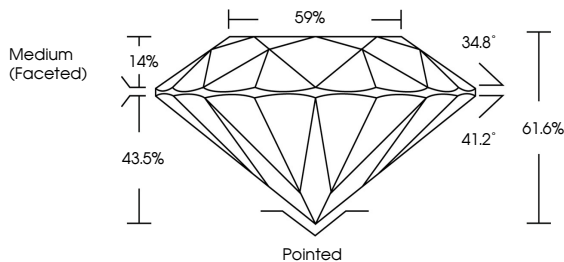


September 25, 2025	IGI Report No LG737546467	3.10 CARATS	F	VVS 2	IDEAL	61.6%	59%	Medium (Faceted)	Pointed	EXCELLENT	EXCELLENT	NONE	IGI LG737546467
IGI Report No	LG737546467	Carat Weight	3.10 CARATS	Color Grade	F	Clarity Grade	VVS 2	Depth	61.6%	Cut Grade	IDEAL	Fluorescence	NONE
Shape and Cutting Style	ROUND BRILLIANT	Measurements	9.32 - 9.35 X 5.75 MM	Table	14%	Crown Width	59%	Crown Angle	34.8°	Pavilion Angle	41.2°	Total Depth	61.6%
Comments	This Laboratory Grown Diamond was created by Chemical Vapor Deposition (CVD) growth process. Type IIa												

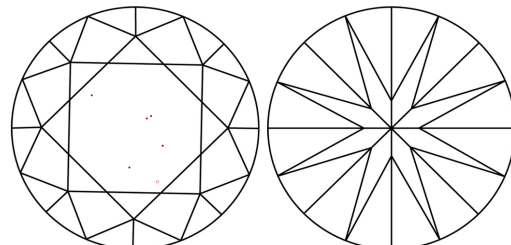


Sample Image Used

**PROPORTIONS**



**CLARITY CHARACTERISTICS**



**KEY TO SYMBOLS**

Red symbols indicate internal characteristics.  
Green symbols indicate external characteristics.

**COLOR**

D	E	F	G	H	I	J	Faint	Very Light	Light
---	---	---	---	---	---	---	-------	------------	-------

**CLARITY**

IF	WS <sup>1-2</sup>	VS <sup>1-2</sup>	SI <sup>1-2</sup>	I <sup>1-3</sup>
Internally Flawless	Very Very Slightly Included	Very Slightly Included	Slightly Included	Included

