



ELECTRONIC COPY

LABORATORY GROWN DIAMOND REPORT

October 6, 2025
IGI Report Number LG737568183
Description LABORATORY GROWN DIAMOND
Shape and Cutting Style CUT CORNERED SQUARE MODIFIED BRILLIANT
Measurements 8.16 X 8.03 X 5.42 MM

GRADING RESULTS

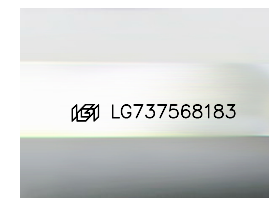
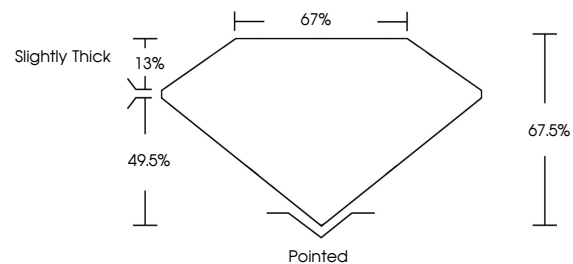
Carat Weight 3.05 CARATS
Color Grade FANCY INTENSE PINK
Clarity Grade VVS 2

ADDITIONAL GRADING INFORMATION

Polish EXCELLENT
Symmetry EXCELLENT
Fluorescence STRONG
Inscription(s) LG737568183

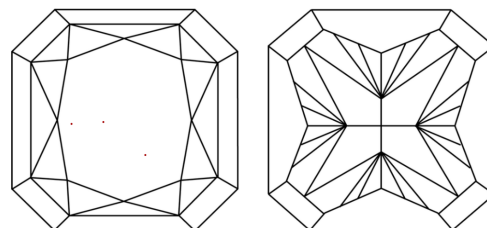
Comments: This Laboratory Grown Diamond was created by Chemical Vapor Deposition (CVD) growth process.
Indications of post-growth treatment.

PROPORTIONS



Sample Image Used

CLARITY CHARACTERISTICS



KEY TO SYMBOLS

Red symbols indicate internal characteristics.
Green symbols indicate external characteristics.

COLOR

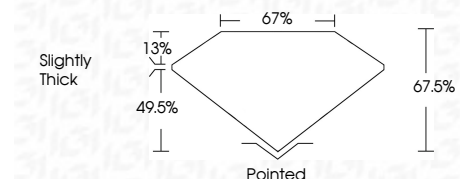
D E F G H I J Faint Very Light Light

CLARITY

FL IF VS¹⁻² VS¹⁻² SI¹⁻² I¹⁻³
Flawless Internally Flawless Very Very Slightly Included Very Slightly Included Slightly Included Included



October 6, 2025
IGI Report Number LG737568183
Description LABORATORY GROWN DIAMOND
Shape and Cutting Style CUT CORNERED SQUARE MODIFIED BRILLIANT
Measurements 8.16 X 8.03 X 5.42 MM
GRADING RESULTS
Carat Weight 3.05 CARATS
Color Grade FANCY INTENSE PINK
Clarity Grade VVS 2



ADDITIONAL GRADING INFORMATION

Polish EXCELLENT
Symmetry EXCELLENT
Fluorescence STRONG
Inscription(s) LG737568183
Comments: This Laboratory Grown Diamond was created by Chemical Vapor Deposition (CVD) growth process.
Indications of post-growth treatment.



IGI



October 6, 2025
IGI Report No LG737568183
CUT CORNERED SQUARE MODIFIED BRILLIANT
8.16 X 8.03 X 5.42 MM
3.05 CARATS
FANCY INTENSE PINK
VVS 2
67.5%
67%
Slightly Thick
Pointed
EXCELLENT
EXCELLENT
STRONG
Fancy Intense Pink
VVS 2
8.16 X 8.03 X 5.42 MM
3.05 CARATS
FANCY INTENSE PINK
VVS 2

Comments: This Laboratory Grown Diamond was created by Chemical Vapor Deposition (CVD) growth process.
Indications of post-growth treatment.