



September 26, 2025

IGI Report Number LG73751476
ROUND BRILLIANT
LABORATORY GROWN DIAMOND
3.69 - 3.73 X 2.19 MM

Carat Weight	0.19 CARAT
Color Grade	D
Clarity Grade	VS 1
Cut Grade	VERY GOOD
Polish	VERY GOOD
Symmetry	VERY GOOD
Fluorescence	NONE
Inscription(s)	IGI LG73751476

Comments: This Laboratory Grown Diamond was created by Chemical Vapor Deposition (CVD) growth process. Type IIa

LABORATORY GROWN DIAMOND REPORT

September 26, 2025
IGI Report Number **LG73751476**
Description **LABORATORY GROWN DIAMOND**
Shape and Cutting Style **ROUND BRILLIANT**
Measurements **3.69 - 3.73 X 2.19 MM**

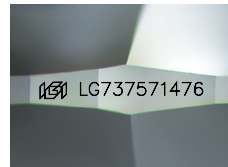
GRADING RESULTS

Carat Weight **0.19 CARAT**
Color Grade **D**
Clarity Grade **VS 1**
Cut Grade **VERY GOOD**

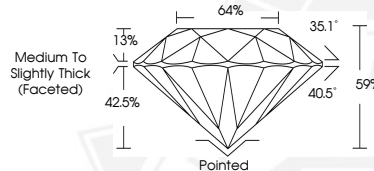
ADDITIONAL GRADING INFORMATION

Polish **VERY GOOD**
Symmetry **VERY GOOD**
Fluorescence **NONE**
Inscription(s) **IGI LG73751476**

Comments: This Laboratory Grown Diamond was created by Chemical Vapor Deposition (CVD) growth process. Type IIa



Sample Image Used



September 26, 2025

IGI Report Number LG73751476
ROUND BRILLIANT
LABORATORY GROWN DIAMOND
3.69 - 3.73 X 2.19 MM

Carat Weight	0.19 CARAT
Color Grade	D
Clarity Grade	VS 1
Cut Grade	VERY GOOD
Polish	VERY GOOD
Symmetry	VERY GOOD
Fluorescence	NONE
Inscription(s)	IGI LG73751476

Comments: This Laboratory Grown Diamond was created by Chemical Vapor Deposition (CVD) growth process. Type IIa



THIS DOCUMENT WAS PRODUCED WITH THE FOLLOWING SECURITY MEASURES: SPECIAL DOCUMENT PAPER, INK SCREENS, WATERMARK, BACKGROUND DESIGNS, HOLOGRAM AND OTHER SECURITY FEATURES NOT LISTED AND DO EXCEED DOCUMENT SECURITY INDUSTRY GUIDELINES.