



**ELECTRONIC COPY**

LG737584382  
Report verification at igi.org



September 29, 2025  
IGI Report Number **LG737584382**  
Description **LABORATORY GROWN DIAMOND**  
Shape and Cutting Style **ROUND BRILLIANT**  
Measurements **12.27 - 12.36 X 7.35 MM**  
**GRADING RESULTS**  
Carat Weight **7.00 CARATS**  
Color Grade **F**  
Clarity Grade **VS 2**  
Cut Grade **EXCELLENT**

September 29, 2025  
IGI Report Number **LG737584382**  
Description **LABORATORY GROWN DIAMOND**  
Shape and Cutting Style **ROUND BRILLIANT**  
Measurements **12.27 - 12.36 X 7.35 MM**

**GRADING RESULTS**

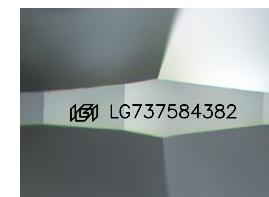
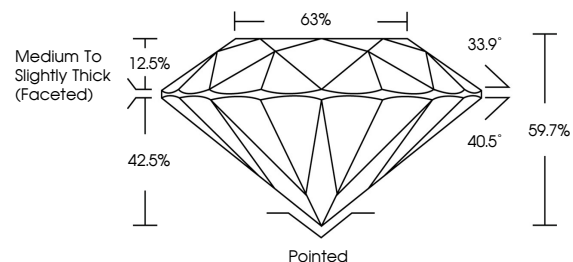
Carat Weight **7.00 CARATS**  
Color Grade **F**  
Clarity Grade **VS 2**  
Cut Grade **EXCELLENT**

**ADDITIONAL GRADING INFORMATION**

Polish **EXCELLENT**  
Symmetry **EXCELLENT**  
Fluorescence **NONE**  
Inscription(s) **IGI LG737584382**

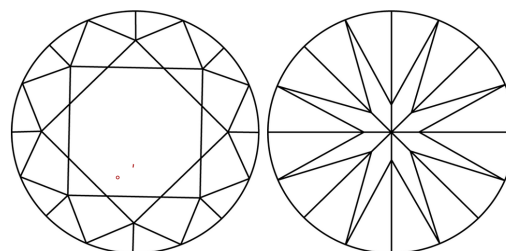
Comments: This Laboratory Grown Diamond was created by Chemical Vapor Deposition (CVD) growth process. Type IIa

**PROPORTIONS**



Sample Image Used

**CLARITY CHARACTERISTICS**



**KEY TO SYMBOLS**

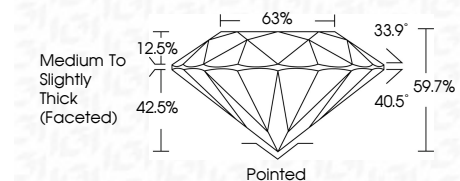
Red symbols indicate internal characteristics.  
Green symbols indicate external characteristics.

**COLOR**

D E F G H I J Faint Very Light Light

**CLARITY**

IF	WS <sup>1-2</sup>	VS <sup>1-2</sup>	SI <sup>1-2</sup>	I <sup>1-3</sup>
Internally Flawless	Very Very Slightly Included	Very Slightly Included	Slightly Included	Included



**ADDITIONAL GRADING INFORMATION**

Polish **EXCELLENT**  
Symmetry **EXCELLENT**  
Fluorescence **NONE**  
Inscription(s) **IGI LG737584382**  
Comments: This Laboratory Grown Diamond was created by Chemical Vapor Deposition (CVD) growth process. Type IIa



September 29, 2025  
IGI Report No LG737584382  
**ROUND BRILLIANT**  
12.27 - 12.36 X 7.35 MM  
7.00 CARATS  
F  
VS 2  
EXCELLENT  
63%  
59.7%  
Medium To Slightly Thick (Faceted)  
Pointed  
EXCELLENT  
EXCELLENT  
NONE  
IGI LG737584382  
Comments: This Laboratory Grown Diamond was created by Chemical Vapor Deposition (CVD) growth process. Type IIa