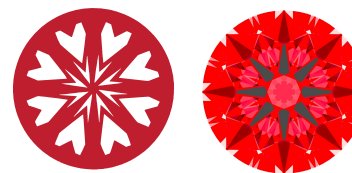




Light Performance Grade: Exceptional



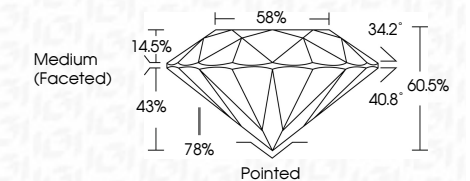
Structured Light Environment Representation



CLARITY table with categories: IF, VS 1-2, V 1-2, SI 1-2, I 1-3



September 26, 2025 IGI Report Number LG737586813 Description LABORATORY GROWN DIAMOND Shape and Cutting Style ROUND BRILLIANT Measurements 9.10 - 9.14 X 5.51 MM GRADING RESULTS Carat Weight 2.77 CARATS Color Grade E Clarity Grade VVS 2 Cut Grade IDEAL



ADDITIONAL GRADING INFORMATION Polish EXCELLENT Symmetry EXCELLENT Fluorescence NONE Inscription(s) IGI LG737586813 Comments: HEARTS & ARROWS This Laboratory Grown Diamond was created by Chemical Vapor Deposition (CVD) growth process. Type IIa



September 26, 2025 IGI Report No. LG737586813 ROUND BRILLIANT 2.77 CARATS E VVS 2 IDEAL 60.5% 58% Medium (Faceted) Pointed EXCELLENT EXCELLENT NONE IGI LG737586813 Comments: HEARTS & ARROWS This Laboratory Grown Diamond was created by Chemical Vapor Deposition (CVD) growth process. Type IIa

ELECTRONIC COPY LABORATORY GROWN DIAMOND REPORT

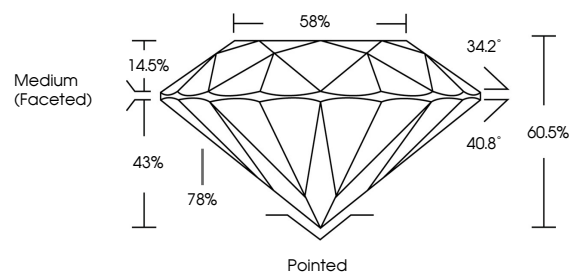
September 26, 2025 IGI Report Number LG737586813 Description LABORATORY GROWN DIAMOND Shape and Cutting Style ROUND BRILLIANT Measurements 9.10 - 9.14 x 5.51 mm

GRADING RESULTS Carat Weight 2.77 CARATS Color Grade E Clarity Grade VVS 2 Cut Grade IDEAL

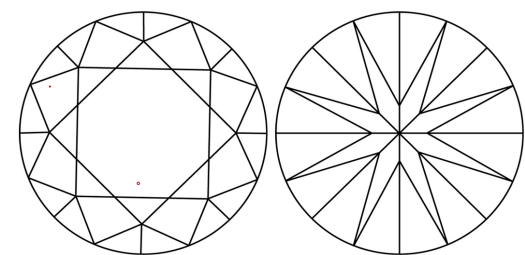
ADDITIONAL GRADING INFORMATION Polish EXCELLENT Symmetry EXCELLENT Fluorescence NONE Inscription(s) IGI LG737586813

Comments: HEARTS & ARROWS This Laboratory Grown Diamond was created by Chemical Vapor Deposition (CVD) growth process. Type IIa

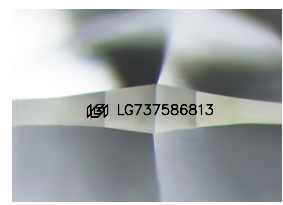
PROPORTIONS



CLARITY CHARACTERISTICS



KEY TO SYMBOLS Red symbols indicate internal characteristics. Green symbols indicate external characteristics.



Sample Image Used

