



**ELECTRONIC COPY**

LG737590710  
Report verification at igi.org



September 28, 2025

IGI Report Number **LG737590710**

Description **LABORATORY GROWN DIAMOND**

Shape and Cutting Style **PRINCESS CUT**

Measurements **7.86 X 7.81 X 5.65 MM**

**GRADING RESULTS**

Carat Weight **3.23 CARATS**

Color Grade **D**

Clarity Grade **VS 1**

September 28, 2025

IGI Report Number **LG737590710**

Description **LABORATORY GROWN DIAMOND**

Shape and Cutting Style **PRINCESS CUT**

Measurements **7.86 X 7.81 X 5.65 MM**

**GRADING RESULTS**

Carat Weight **3.23 CARATS**

Color Grade **D**

Clarity Grade **VS 1**

**ADDITIONAL GRADING INFORMATION**

Polish **EXCELLENT**

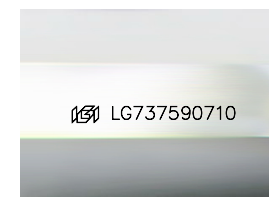
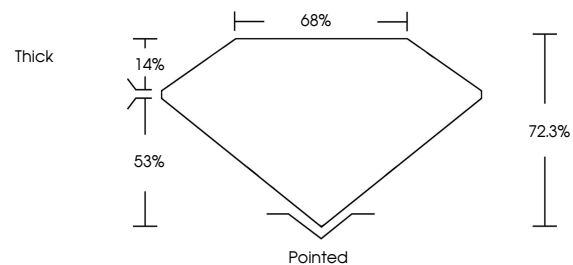
Symmetry **EXCELLENT**

Fluorescence **NONE**

Inscription(s) **IGI LG737590710**

Comments: This Laboratory Grown Diamond was created by Chemical Vapor Deposition (CVD) growth process.  
Type IIa

**PROPORTIONS**



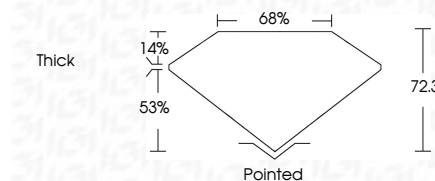
Sample Image Used

**COLOR**

D E F G H I J Faint Very Light Light

**CLARITY**

IF	VS <sup>1-2</sup>	VS <sup>1-2</sup>	SI <sup>1-2</sup>	I <sup>1-3</sup>
Internally Flawless	Very Very Slightly Included	Very Slightly Included	Slightly Included	Included



**ADDITIONAL GRADING INFORMATION**

Polish **EXCELLENT**

Symmetry **EXCELLENT**

Fluorescence **NONE**

Inscription(s) **IGI LG737590710**

Comments: This Laboratory Grown Diamond was created by Chemical Vapor Deposition (CVD) growth process.  
Type IIa



**IGI**



September 28, 2025	<b>3.23 CARATS</b>	<b>D</b>	<b>VS 1</b>	<b>72.3%</b>	<b>65%</b>	<b>Thick</b>	<b>Pointed</b>
IGI Report No LG737590710	<b>7.86 X 7.81 X 5.65 MM</b>	<b>D</b>	<b>VS 1</b>	<b>72.3%</b>	<b>65%</b>	<b>Thick</b>	<b>Pointed</b>
<b>PRINCESS CUT</b>	Carat Weight	Color Grade	Clarity Grade	Table	Girdle	Culet	Polish
							<b>EXCELLENT</b>
							Symmetry
							<b>EXCELLENT</b>
							Fluorescence
							<b>NONE</b>
							Inscription(s)
							<b>IGI LG737590710</b>

Comments: This Laboratory Grown Diamond was created by Chemical Vapor Deposition (CVD) growth process.  
Type IIa