



ELECTRONIC COPY

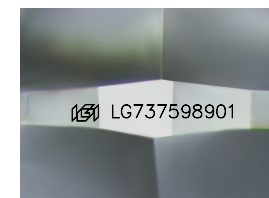
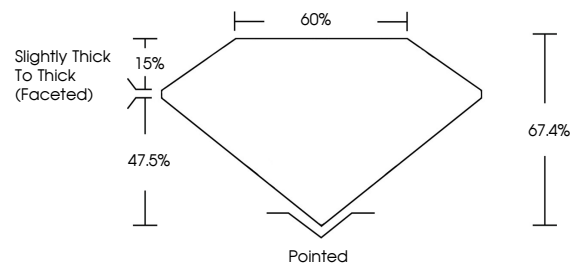
LG737598901
Report verification at igi.org



September 29, 2025
IGI Report Number LG737598901
Description LABORATORY GROWN DIAMOND
Shape and Cutting Style CUSHION MODIFIED BRILLIANT
Measurements 10.06 X 7.17 X 4.83 MM
GRADING RESULTS
Carat Weight 3.04 CARATS
Color Grade D
Clarity Grade VS 1

September 29, 2025
IGI Report Number LG737598901
Description LABORATORY GROWN DIAMOND
Shape and Cutting Style CUSHION MODIFIED BRILLIANT
Measurements 10.06 X 7.17 X 4.83 MM

PROPORTIONS

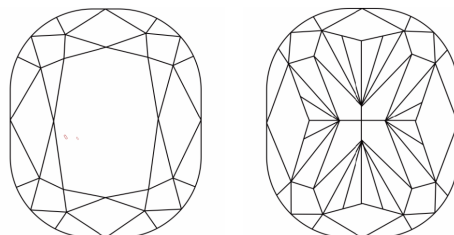


Sample Image Used

GRADING RESULTS

Carat Weight 3.04 CARATS
Color Grade D
Clarity Grade VS 1

CLARITY CHARACTERISTICS



KEY TO SYMBOLS

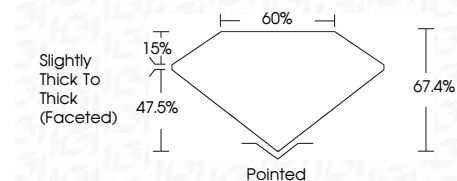
Red symbols indicate internal characteristics.
Green symbols indicate external characteristics.

COLOR

D E F G H I J Faint Very Light Light

CLARITY

IF VS 1-2 VS 1-2 SI 1-2 I 1-3
Internally Flawless Very Very Slightly Included Very Slightly Included Slightly Included Included



ADDITIONAL GRADING INFORMATION

Polish EXCELLENT
Symmetry EXCELLENT
Fluorescence NONE
Inscription(s) LG737598901
Comments: As Grown - No indication of post-growth treatment.
This Laboratory Grown Diamond was created by High Pressure High Temperature (HPHT) growth process.
Type II

ADDITIONAL GRADING INFORMATION

Polish EXCELLENT
Symmetry EXCELLENT
Fluorescence NONE
Inscription(s) LG737598901

Comments: As Grown - No indication of post-growth treatment.
This Laboratory Grown Diamond was created by High Pressure High Temperature (HPHT) growth process.
Type II



September 29, 2025
IGI Report No LG737598901
CUSHION MODIFIED BRILLIANT
10.06 X 7.17 X 4.83 MM
3.04 CARATS
D
VS 1
67.4%
60%
Slightly Thick To Thick (Faceted)
Pointed
EXCELLENT
EXCELLENT
NONE
LG737598901
Comments: As Grown - No indication of post-growth treatment.
This Laboratory Grown Diamond was created by High Pressure High Temperature (HPHT) growth process.
Type II