



# INTERNATIONAL GEMOLOGICAL INSTITUTE

ELECTRONIC COPY

## LABORATORY GROWN DIAMOND REPORT

October 2, 2025  
IGI Report Number **LG738526346**  
Description **LABORATORY GROWN DIAMOND**  
Shape and Cutting Style **ROUND BRILLIANT**  
Measurements **3.58 - 3.60 X 2.23 MM**

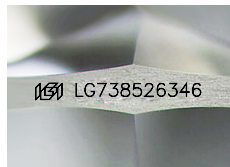
### GRADING RESULTS

Carat Weight **0.18 CARAT**  
Color Grade **E**  
Clarity Grade **INTERNALLY FLAWLESS**  
Cut Grade **VERY GOOD**

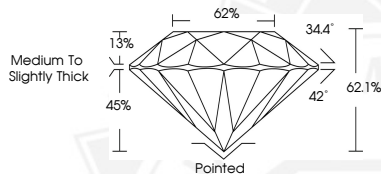
### ADDITIONAL GRADING INFORMATION

Polish **VERY GOOD**  
Symmetry **VERY GOOD**  
Fluorescence **NONE**  
Inscription(s) **IGI LG738526346**

Comments: As Grown - No indication of post-growth treatment. This Laboratory Grown Diamond was created by High Pressure High Temperature (HPHT) growth process. Type II



Sample Image Used



October 2, 2025  
IGI Report Number **LG738526346**  
**ROUND BRILLIANT**  
**LABORATORY GROWN DIAMOND**  
**3.58 - 3.60 X 2.23 MM**  
Carat Weight **0.18 CARAT**  
Color Grade **E**  
Clarity Grade **I.F.**  
Cut Grade **VERY GOOD**  
Polish **VERY GOOD**  
Symmetry **VERY GOOD**  
Fluorescence **NONE**  
Inscription(s) **IGI LG738526346**

Comments: As Grown - No indication of post-growth treatment. This Laboratory Grown Diamond was created by High Pressure High Temperature (HPHT) growth process. Type II



October 2, 2025  
IGI Report Number **LG738526346**  
**ROUND BRILLIANT**  
**LABORATORY GROWN DIAMOND**  
**3.58 - 3.60 X 2.23 MM**  
Carat Weight **0.18 CARAT**  
Color Grade **E**  
Clarity Grade **I.F.**  
Cut Grade **VERY GOOD**  
Polish **VERY GOOD**  
Symmetry **VERY GOOD**  
Fluorescence **NONE**  
Inscription(s) **IGI LG738526346**

Comments: As Grown - No indication of post-growth treatment. This Laboratory Grown Diamond was created by High Pressure High Temperature (HPHT) growth process. Type II



THIS DOCUMENT WAS PRODUCED WITH THE FOLLOWING SECURITY MEASURES: SPECIAL DOCUMENT PAPER, INK SCREENS, WATERMARK, BACKGROUND DESIGNS, HOLOGRAM AND OTHER SECURITY FEATURES NOT LISTED AND DO EXCEED DOCUMENT SECURITY INDUSTRY GUIDELINES.

For terms & conditions and to verify this report, please visit [www.igi.org](http://www.igi.org)