



# INTERNATIONAL GEMOLOGICAL INSTITUTE

ELECTRONIC COPY

## LABORATORY GROWN DIAMOND REPORT

October 4, 2025  
IGI Report Number **LG738526353**  
Description **LABORATORY GROWN DIAMOND**  
Shape and Cutting Style **ROUND BRILLIANT**  
Measurements **3.87 - 3.90 X 2.32 MM**

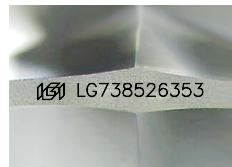
### GRADING RESULTS

Carat Weight **0.21 CARAT**  
Color Grade **D**  
Clarity Grade **VVS 2**  
Cut Grade **GOOD**

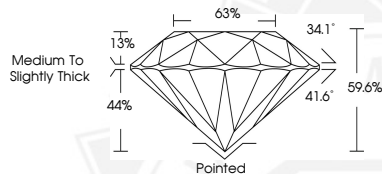
### ADDITIONAL GRADING INFORMATION

Polish **VERY GOOD**  
Symmetry **FAIR**  
Fluorescence **NONE**  
Inscription(s) **IGI LG738526353**

Comments: This Laboratory Grown Diamond was created by Chemical Vapor Deposition (CVD) growth process.  
Type IIa



Sample Image Used



October 4, 2025

IGI Report Number **LG738526353**

**ROUND BRILLIANT**

**LABORATORY GROWN DIAMOND**

**3.87 - 3.90 X 2.32 MM**

Carat Weight **0.21 CARAT**

Color Grade **D**

Clarity Grade **VVS 2**

Cut Grade **GOOD**

Polish **VERY GOOD**

Symmetry **FAIR**

Fluorescence **NONE**

Inscription(s) **IGI LG738526353**

Comments: This Laboratory Grown Diamond was created by Chemical Vapor Deposition (CVD) growth process. Type IIa



October 4, 2025

IGI Report Number **LG738526353**

**ROUND BRILLIANT**

**LABORATORY GROWN DIAMOND**

**3.87 - 3.90 X 2.32 MM**

Carat Weight **0.21 CARAT**

Color Grade **D**

Clarity Grade **VVS 2**

Cut Grade **GOOD**

Polish **VERY GOOD**

Symmetry **FAIR**

Fluorescence **NONE**

Inscription(s) **IGI LG738526353**

Comments: This Laboratory Grown Diamond was created by Chemical Vapor Deposition (CVD) growth process. Type IIa



THIS DOCUMENT WAS PRODUCED WITH THE FOLLOWING SECURITY MEASURES: SPECIAL DOCUMENT PAPER, INK SCREENS, WATERMARK, BACKGROUND DESIGNS, HOLOGRAM AND OTHER SECURITY FEATURES NOT LISTED AND DO EXCEED DOCUMENT SECURITY INDUSTRY GUIDELINES.

For terms & conditions and to verify this report, please visit [www.igi.org](http://www.igi.org)