



**ELECTRONIC COPY**

LG739505141  
Report verification at igi.org



October 11, 2025

IGI Report Number **LG739505141**

Description **LABORATORY GROWN DIAMOND**

Shape and Cutting Style **CUT CORNERED  
RECTANGULAR MODIFIED  
BRILLIANT**

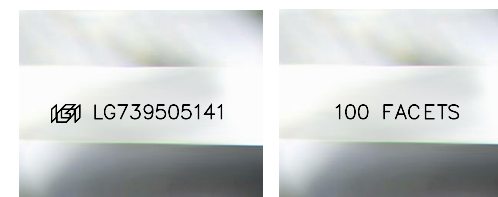
Measurements **8.97 X 6.31 X 4.14 MM**

**GRADING RESULTS**

Carat Weight **2.04 CARATS**

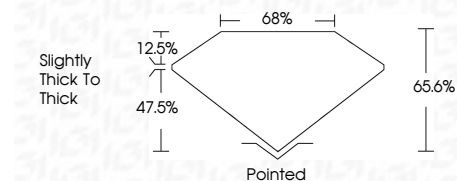
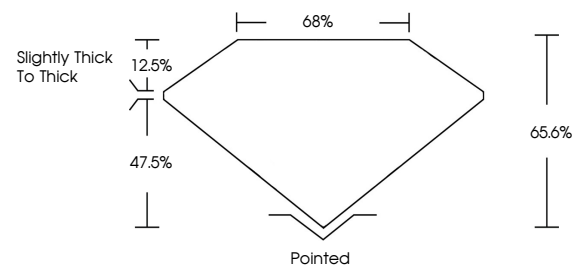
Color Grade **E**

Clarity Grade **VVS 2**



Sample Images Used

**PROPORTIONS**



October 11, 2025

IGI Report Number **LG739505141**

Description **LABORATORY GROWN DIAMOND**

Shape and Cutting Style **CUT CORNERED RECTANGULAR  
MODIFIED BRILLIANT**

Measurements **8.97 X 6.31 X 4.14 MM**

**GRADING RESULTS**

Carat Weight **2.04 CARATS**

Color Grade **E**

Clarity Grade **VVS 2**

**ADDITIONAL GRADING INFORMATION**

Polish **EXCELLENT**

Symmetry **EXCELLENT**

Fluorescence **NONE**

Inscription(s) **IGI LG739505141  
100 FACETS**

Comments: This Laboratory Grown Diamond was created by Chemical Vapor Deposition (CVD) growth process. Type IIa

**COLOR**

D E F G H I J Faint Very Light Light

**CLARITY**

FL IF VVS<sup>1-2</sup> VS<sup>1-2</sup> SI<sup>1-2</sup> I<sup>1-3</sup>

Flawless Internally Flawless Very Very Slightly Included Very Slightly Included Slightly Included Included

**ADDITIONAL GRADING INFORMATION**

Polish **EXCELLENT**

Symmetry **EXCELLENT**

Fluorescence **NONE**

Inscription(s) **IGI LG739505141  
100 FACETS**

Comments: This Laboratory Grown Diamond was created by Chemical Vapor Deposition (CVD) growth process. Type IIa



October 11, 2025  
IGI Report No LG739505141  
CUT CORNERED RECT. MODIFIED BRILLIANT  
8.97 X 6.31 X 4.14 MM  
Carat Weight 2.04 CARATS  
Color Grade E  
Clarity Grade VVS 2  
Depth 65.6%  
Table 68%  
Girdle Slightly thick to thick  
Culet Pointed  
Polish EXCELLENT  
Symmetry EXCELLENT  
Fluorescence NONE  
Inscription(s) IGI LG739505141 100 FACETS  
Comments: This Laboratory Grown Diamond was created by Chemical Vapor Deposition (CVD) growth process. Type IIa