



ELECTRONIC COPY

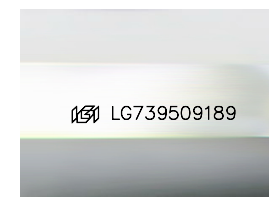
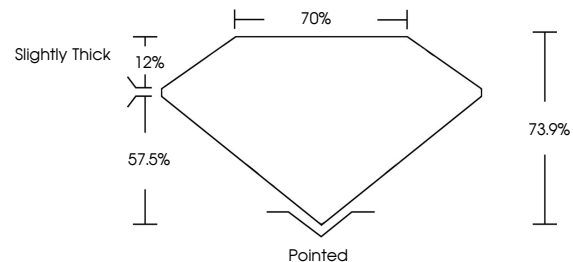
LABORATORY GROWN DIAMOND REPORT

October 1, 2025
IGI Report Number LG739509189
Description LABORATORY GROWN DIAMOND
Shape and Cutting Style PRINCESS CUT
Measurements 7.32 X 7.31 X 5.40 MM
GRADING RESULTS
Carat Weight 2.58 CARATS
Color Grade E
Clarity Grade VVS 2

ADDITIONAL GRADING INFORMATION

Polish EXCELLENT
Symmetry VERY GOOD
Fluorescence NONE
Inscription(s) IGI LG739509189
Comments: This Laboratory Grown Diamond was created by Chemical Vapor Deposition (CVD) growth process.
Type IIa

PROPORTIONS



Sample Image Used

COLOR

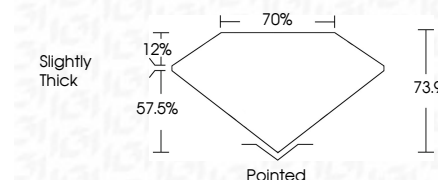
D E F G H I J Faint Very Light Light

CLARITY

IF VS¹⁻² VS¹⁻² SI¹⁻² I¹⁻³
Internally Flawless Very Very Slightly Included Very Slightly Included Slightly Included Included



October 1, 2025
IGI Report Number LG739509189
Description LABORATORY GROWN DIAMOND
Shape and Cutting Style PRINCESS CUT
Measurements 7.32 X 7.31 X 5.40 MM
GRADING RESULTS
Carat Weight 2.58 CARATS
Color Grade E
Clarity Grade VVS 2



ADDITIONAL GRADING INFORMATION

Polish EXCELLENT
Symmetry VERY GOOD
Fluorescence NONE
Inscription(s) IGI LG739509189
Comments: This Laboratory Grown Diamond was created by Chemical Vapor Deposition (CVD) growth process.
Type IIa



IGI



October 1, 2025
IGI Report No LG739509189
PRINCESS CUT
7.32 X 7.31 X 5.40 MM
2.58 CARATS
E
Carat Weight
Color Grade
Clarity Grade
Depth
Table
Girdle
Slightly Thick
Pointed
EXCELLENT
VERY GOOD
NONE
IGI LG739509189
Comments: This Laboratory Grown Diamond was created by Chemical Vapor Deposition (CVD) growth process.
Type IIa