



ELECTRONIC COPY

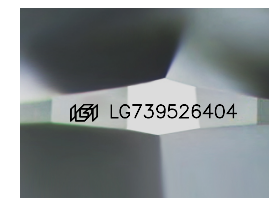
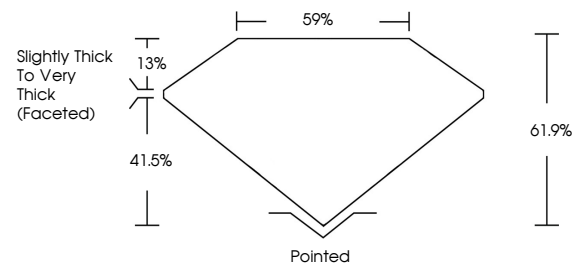
LG739526404
Report verification at igi.org



October 9, 2025
IGI Report Number **LG739526404**
Description **LABORATORY GROWN DIAMOND**
Shape and Cutting Style **CUSHION MODIFIED BRILLIANT**
Measurements **8.23 X 5.20 X 3.22 MM**
GRADING RESULTS
Carat Weight **1.25 CARAT**
Color Grade **FANCY VIVID PINK**
Clarity Grade **VS 1**

October 9, 2025
IGI Report Number **LG739526404**
Description **LABORATORY GROWN DIAMOND**
Shape and Cutting Style **CUSHION MODIFIED BRILLIANT**
Measurements **8.23 X 5.20 X 3.22 MM**

PROPORTIONS

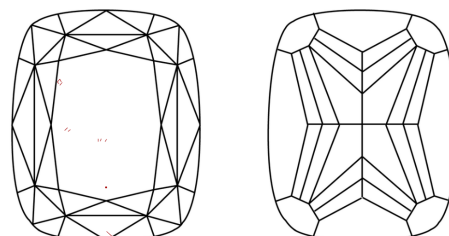


Sample Image Used

GRADING RESULTS

Carat Weight **1.25 CARAT**
Color Grade **FANCY VIVID PINK**
Clarity Grade **VS 1**

CLARITY CHARACTERISTICS



KEY TO SYMBOLS

Red symbols indicate internal characteristics.
Green symbols indicate external characteristics.

ADDITIONAL GRADING INFORMATION

Polish **EXCELLENT**
Symmetry **EXCELLENT**
Fluorescence **STRONG**
Inscription(s) **IGI LG739526404**

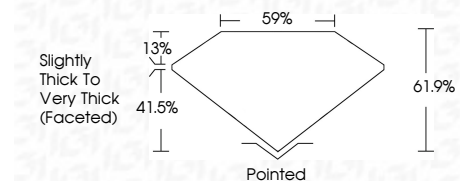
Comments: This Laboratory Grown Diamond was created by Chemical Vapor Deposition (CVD) growth process.
Indications of post-growth treatment.

COLOR

D E F G H I J Faint Very Light Light

CLARITY

FL	IF	VS ¹⁻²	VS ¹⁻²	SI ¹⁻²	I ¹⁻³
Flawless	Internally Flawless	Very Very Slightly Included	Very Slightly Included	Slightly Included	Included



ADDITIONAL GRADING INFORMATION

Polish **EXCELLENT**
Symmetry **EXCELLENT**
Fluorescence **STRONG**
Inscription(s) **IGI LG739526404**
Comments: This Laboratory Grown Diamond was created by Chemical Vapor Deposition (CVD) growth process.
Indications of post-growth treatment.



October 9, 2025
IGI Report No **LG739526404**
CUSHION MODIFIED BRILLIANT
8.23 X 5.20 X 3.22 MM
Carat Weight **1.25 CARAT**
Color Grade **FANCY VIVID PINK**
Clarity Grade **VS 1**
Table **61.9%**
Girdle **Slightly Thick To Very Thick (Faceted)**
Culet **Pointed**
Polish **EXCELLENT**
Symmetry **EXCELLENT**
Fluorescence **STRONG**
Inscription(s) **IGI LG739526404**
Comments: This Laboratory Grown Diamond was created by Chemical Vapor Deposition (CVD) growth process.
Indications of post-growth treatment.