



ELECTRONIC COPY

LG739527444
Report verification at igi.org



October 8, 2025

IGI Report Number **LG739527444**

Description **LABORATORY GROWN DIAMOND**

Shape and Cutting Style **OVAL MODIFIED BRILLIANT**

Measurements **8.21 X 5.80 X 3.53 MM**

GRADING RESULTS

Carat Weight **1.24 CARAT**

Color Grade **FANCY INTENSE YELLOW**

Clarity Grade **VVS 2**

October 8, 2025
IGI Report Number **LG739527444**
Description **LABORATORY GROWN DIAMOND**
Shape and Cutting Style **OVAL MODIFIED BRILLIANT**
Measurements **8.21 X 5.80 X 3.53 MM**

GRADING RESULTS

Carat Weight **1.24 CARAT**

Color Grade **FANCY INTENSE YELLOW**

Clarity Grade **VVS 2**

ADDITIONAL GRADING INFORMATION

Polish **EXCELLENT**

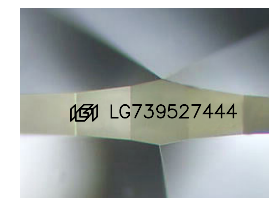
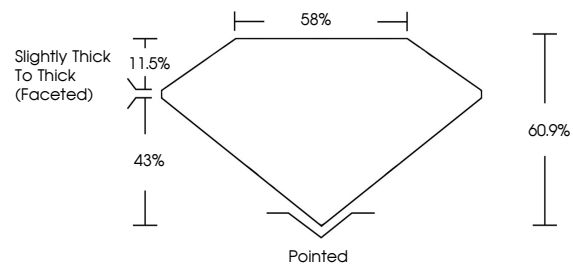
Symmetry **EXCELLENT**

Fluorescence **NONE**

Inscription(s) **IGI LG739527444**

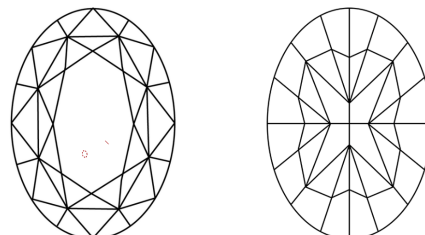
Comments: This Laboratory Grown Diamond was created by Chemical Vapor Deposition (CVD) growth process.

PROPORTIONS



Sample Image Used

CLARITY CHARACTERISTICS



KEY TO SYMBOLS

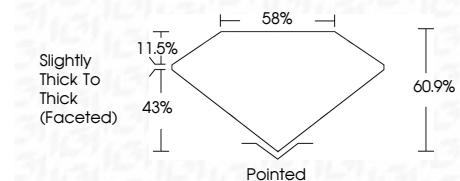
Red symbols indicate internal characteristics.
Green symbols indicate external characteristics.

COLOR

D E F G H I J Faint Very Light Light

CLARITY

| FL | IF | VVS ¹⁻² | VS ¹⁻² | SI ¹⁻² | I ¹⁻³ |
|----------|---------------------|-----------------------------|------------------------|-------------------|------------------|
| Flawless | Internally Flawless | Very Very Slightly Included | Very Slightly Included | Slightly Included | Included |



ADDITIONAL GRADING INFORMATION

Polish **EXCELLENT**

Symmetry **EXCELLENT**

Fluorescence **NONE**

Inscription(s) **IGI LG739527444**

Comments: This Laboratory Grown Diamond was created by Chemical Vapor Deposition (CVD) growth process.



October 8, 2025
IGI Report No **LG739527444**
OVAL MODIFIED BRILLIANT
Carat Weight **1.24 CARAT**
Color Grade **FANCY INTENSE YELLOW**
Clarity Grade **VVS 2**
Depth **60.9%**
Table **58%**
Girdle **Slightly Thick To Thick (Faceted)**
Culet **Pointed**
Polish **EXCELLENT**
Symmetry **EXCELLENT**
Fluorescence **NONE**
Inscription(s) **IGI LG739527444**
Comments: This Laboratory Grown Diamond was created by Chemical Vapor Deposition (CVD) growth process.