

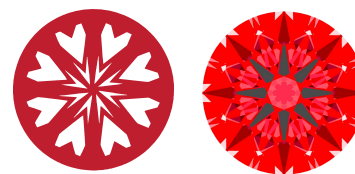


**INTERNATIONAL  
GEMOLOGICAL  
INSTITUTE**

LG739537310  
Report verification at [igi.org](http://igi.org)

**LIGHT PERFORMANCE REPORT**

**Light Performance Grade: Exceptional**



**Structured Light Environment Representation**



**CLARITY**

FL	IF	VS <sup>1-2</sup>	VS <sup>1-2</sup>	SI <sup>1-2</sup>	I <sup>1-3</sup>
Flawless	Internally Flawless	Very Very Slightly Included	Very Slightly Included	Slightly Included	Included



October 7, 2025  
IGI Report Number **LG739537310**  
Description **LABORATORY GROWN DIAMOND**  
Shape and Cutting Style **ROUND BRILLIANT**  
Measurements **9.40 - 9.44 X 5.70 MM**  
**GRADING RESULTS**  
Carat Weight **3.08 CARATS**  
Color Grade **D**  
Clarity Grade **VS 2**  
Cut Grade **IDEAL**

**ELECTRONIC COPY  
LABORATORY GROWN DIAMOND REPORT**

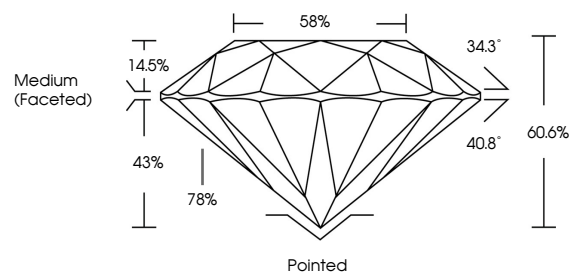
October 7, 2025  
IGI Report Number **LG739537310**  
Description **LABORATORY GROWN DIAMOND**  
Shape and Cutting Style **ROUND BRILLIANT**  
Measurements **9.40 - 9.44 x 5.70 mm**

**GRADING RESULTS**  
Carat Weight **3.08 CARATS**  
Color Grade **D**  
Clarity Grade **VS 2**  
Cut Grade **IDEAL**

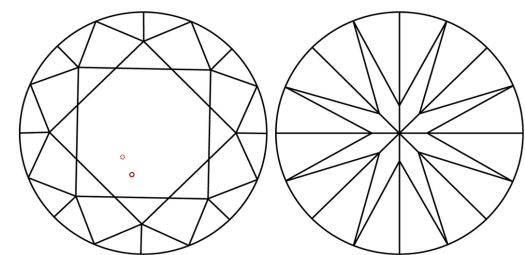
**ADDITIONAL GRADING INFORMATION**  
Polish **EXCELLENT**  
Symmetry **EXCELLENT**  
Fluorescence **NONE**  
Inscription(s) **IGI LG739537310**

Comments: HEARTS & ARROWS  
This Laboratory Grown Diamond was created by Chemical Vapor Deposition (CVD) growth process. Type IIa

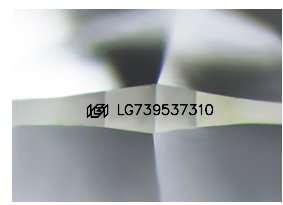
**PROPORTIONS**



**CLARITY CHARACTERISTICS**



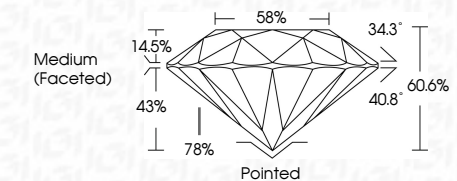
**KEY TO SYMBOLS**  
Red symbols indicate internal characteristics.  
Green symbols indicate external characteristics.



Sample Image Used

[www.igi.org](http://www.igi.org)

© IGI 2020, International Gemological Institute FD - 10 20



**ADDITIONAL GRADING INFORMATION**  
Polish **EXCELLENT**  
Symmetry **EXCELLENT**  
Fluorescence **NONE**  
Inscription(s) **IGI LG739537310**  
Comments: HEARTS & ARROWS  
This Laboratory Grown Diamond was created by Chemical Vapor Deposition (CVD) growth process. Type IIa



October 7, 2025	IGI Report No LG739537310	3.08 CARATS	D	Polished
ROUND BRILLIANT	9.40 - 9.44 X 5.70 MM	IDEAL	VS 2	EXCELLENT
Color Grade	Cut Grade	60.6%	58%	EXCELLENT
Clarity Grade	Table	Medium (Faceted)		NONE
Depth	Girdle			IGI LG739537310
Fluorescence	Cut			
Inscription(s)	Polish			
	Symmetry			
	Fluorescence			
	Inscription(s)			
<b>Comments: HEARTS &amp; ARROWS</b> This Laboratory Grown Diamond was created by Chemical Vapor Deposition (CVD) growth process. Type IIa				

