

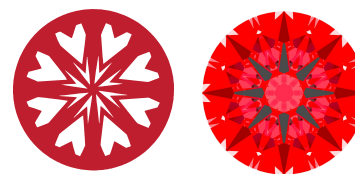


**INTERNATIONAL  
GEMOLOGICAL  
INSTITUTE**

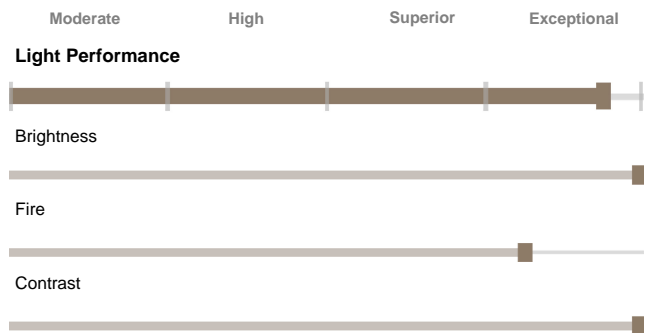
LG739537315  
Report verification at [igi.org](http://igi.org)

**LIGHT PERFORMANCE REPORT**

**Light Performance Grade: Exceptional**



**Structured Light Environment Representation**



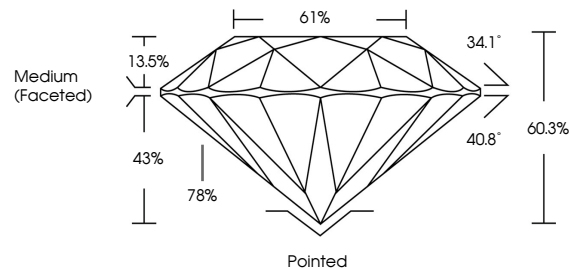
**COLOR**



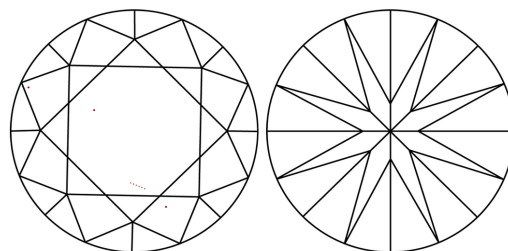
**CLARITY**



**PROPORTIONS**

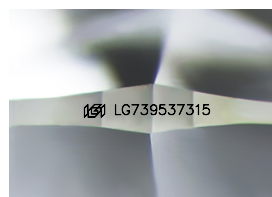


**CLARITY CHARACTERISTICS**



**KEY TO SYMBOLS**

Red symbols indicate internal characteristics.  
Green symbols indicate external characteristics.



Sample Image Used

[www.igi.org](http://www.igi.org)

**ELECTRONIC COPY**

**LABORATORY GROWN DIAMOND REPORT**

October 11, 2025  
IGI Report Number **LG739537315**  
Description **LABORATORY GROWN DIAMOND**  
Shape and Cutting Style **ROUND BRILLIANT**  
Measurements **9.32 - 9.36 x 5.63 mm**

**GRADING RESULTS**

Carat Weight **3.04 CARATS**  
Color Grade **D**  
Clarity Grade **VS 1**  
Cut Grade **EXCELLENT**

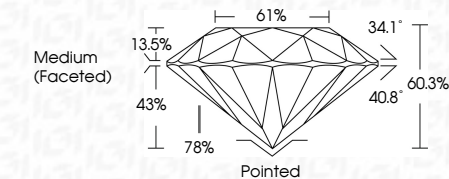
**ADDITIONAL GRADING INFORMATION**

Polish **EXCELLENT**  
Symmetry **EXCELLENT**  
Fluorescence **NONE**  
Inscription(s) **IGI LG739537315**

Comments: HEARTS & ARROWS  
This Laboratory Grown Diamond was created by Chemical Vapor Deposition (CVD) growth process. Type IIa



October 11, 2025  
IGI Report Number **LG739537315**  
Description **LABORATORY GROWN DIAMOND**  
Shape and Cutting Style **ROUND BRILLIANT**  
Measurements **9.32 - 9.36 X 5.63 MM**  
**GRADING RESULTS**  
Carat Weight **3.04 CARATS**  
Color Grade **D**  
Clarity Grade **VS 1**  
Cut Grade **EXCELLENT**



**ADDITIONAL GRADING INFORMATION**

Polish **EXCELLENT**  
Symmetry **EXCELLENT**  
Fluorescence **NONE**  
Inscription(s) **IGI LG739537315**  
Comments: HEARTS & ARROWS  
This Laboratory Grown Diamond was created by Chemical Vapor Deposition (CVD) growth process. Type IIa



**IGI**

October 11, 2025	IGI Report No LG739537315	3.04 CARATS	D	Polished
ROUND BRILLIANT		EXCELLENT	VS 1	EXCELLENT
9.32 - 9.36 X 5.63 MM		EXCELLENT	60.3%	EXCELLENT
Color Grade		EXCELLENT	61%	NONE
Clarity Grade		EXCELLENT	Medium (Faceted)	IGI LG739537315
Cut Grade		EXCELLENT		
Depth		EXCELLENT		
Table		EXCELLENT		
Grade		EXCELLENT		
Culet		EXCELLENT		
Polish		EXCELLENT		
Symmetry		EXCELLENT		
Fluorescence		NONE		
Inscription(s)		IGI LG739537315		

Comments: HEARTS & ARROWS  
This Laboratory Grown Diamond was created by Chemical Vapor Deposition (CVD) growth process. Type IIa